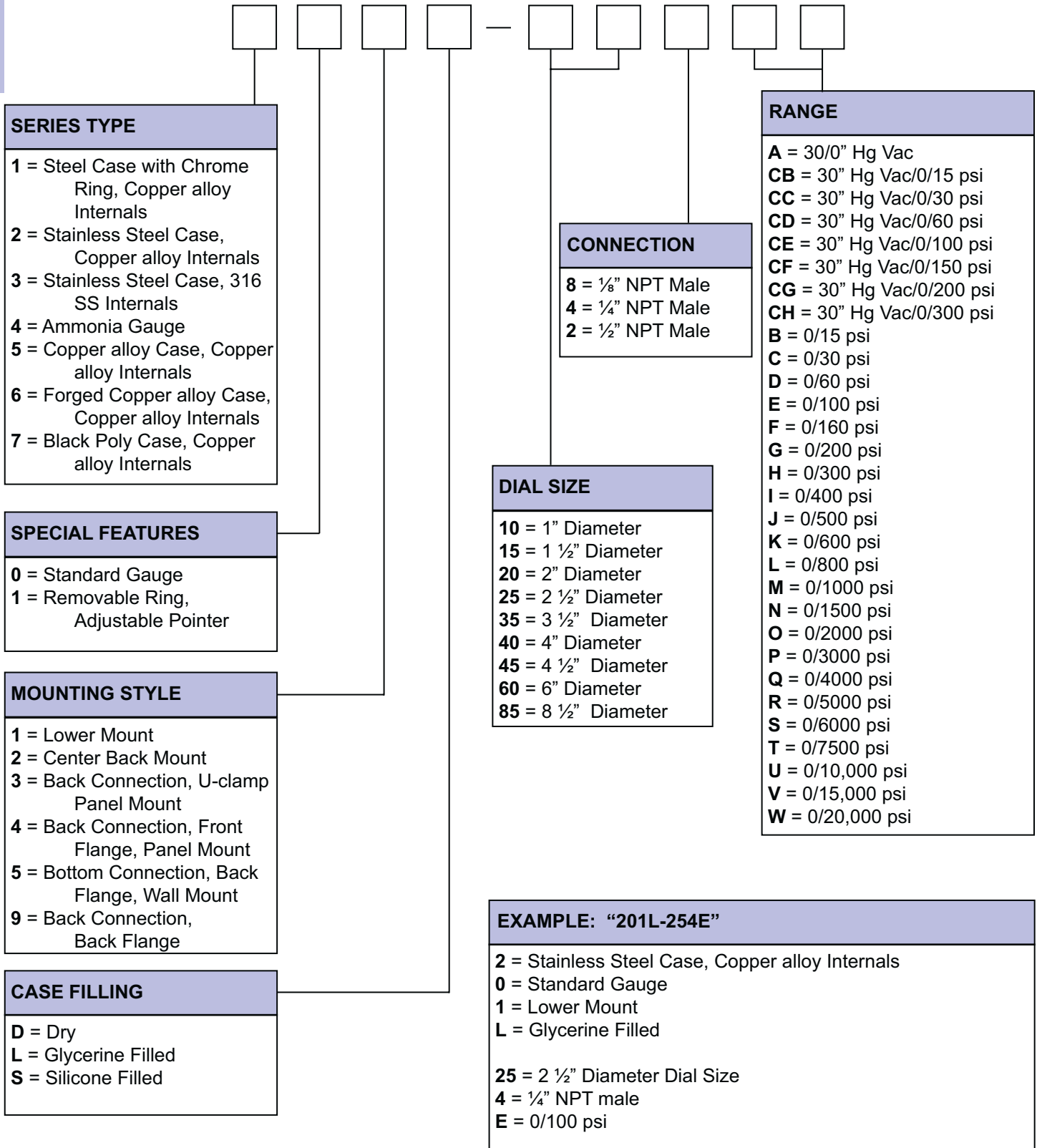




PART NUMBERING SYSTEM

1



EXAMPLE: "201L-254E"

2 = Stainless Steel Case, Copper alloy Internals
 0 = Standard Gauge
 1 = Lower Mount
 L = Glycerine Filled

25 = 2 1/2" Diameter Dial Size
 4 = 1/4" NPT male
 E = 0/100 psi

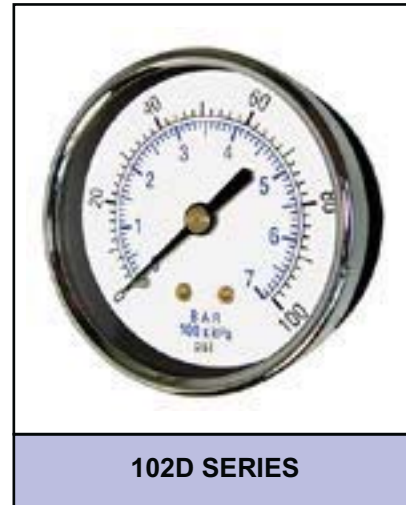
NOTE: Not all part numbers or options are available from stock. Consult PIC Gauges for availability.

100 SERIES UTILITY GAUGE



1

Utility gauge for commercial and industrial markets
Steel case, chrome bezel, copper alloy internals



STANDARD DIAL CONFIGURATIONS FOR 100 SERIES

Dial Range	Figure Intervals	Graduation Intervals	Dial Range	Figure Intervals	Graduation Intervals	Dial Range	Figure Intervals	Graduation Intervals
30/0"hg Vac	5" hg	0.5" hg	0/30 psi	5 psi	0.5 psi	0/1000 psi	200 psi	10 psi
30/0/15 psi	10" hg/5 psi	1" hg/0.5 psi	0/60 psi	10 psi	1 psi	0/1500 psi	200 psi	20 psi
30/0/30 psi	10" hg/10psi	1" hg/1 psi	0/100 psi	20 psi	2 psi	0/2000 psi	400 psi	50 psi
30/0/60 psi	10" hg/10psi	2" hg/1 psi	0/160 psi	20 psi	2 psi	0/3000 psi	500 psi	50 psi
30/0/100 psi	30" hg/20psi	5" hg/2 psi	0/200 psi	40 psi	5 psi	0/4000 psi	800 psi	100 psi
30/0/150 psi	30" hg/20psi	5" hg/2 psi	0/300 psi	50 psi	5 psi	0/5000 psi	1000 psi	100 psi
30/0/300 psi	30" hg/50psi	10" hg/5 psi	0/400 psi	50 psi	5 psi	0/6000 psi	1000 psi	100 psi
0/15 psi	2 psi	0.1 psi	0/600 psi	100 psi	10 psi			

NOTE: Because of continuing improvements, increments/specifications are subject to change without notice. Stock ranges vary by dial size and configuration. Consult PIC Gauges for availability.



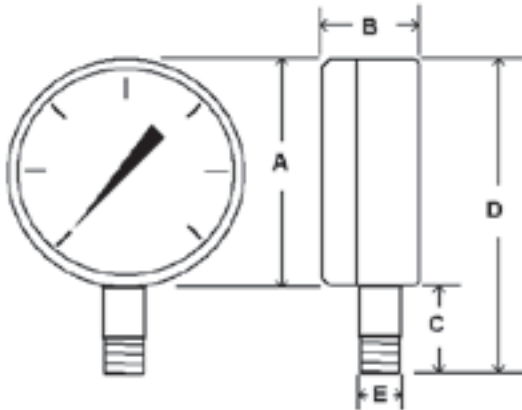
101D UTILITY GAUGE LOWER MOUNT

1 Utility gauge for commercial and industrial markets Black steel case, chrome bezel, copper alloy internals

SPECIFICATIONS

Dial	1 1/2" (40 mm), 2" (50 mm), 2 1/2" (63 mm), 3 1/2" (88 mm), 4 1/2" (114 mm)
Case	Black steel, dry non-fillable
Wetted Parts	Copper alloy
Bezel	Chrome plated steel, fixed
Lens	Plastic (4 1/2" = glass lens)
Pointer	Black aluminum
Connection	Lower mount 1 1/2" dial = 1/8" NPT 2" dial = 1/8" or 1/4" NPT 2 1/2" dial = 1/4" NPT 3 1/2" dial = 1/4" NPT 4 1/2" dial = 1/4" NPT
Scale	Standard: psi/BAR (x 100 = kPa) Single scale psi available from stock
Accuracy	3-2-3% of span, ASME B40.1 Grade B
Ambient Temp	-50° F to 160° F

Design meets or exceeds ASME B40.100 pressure gauge standard.



AVAILABLE OPTIONS*

- Certificate of Accuracy, NIST traceable
- Custom Dial
- Anti-Vibration Movement, see page 109
- Glass Lens
- Stainless Steel Case
- Cleaned for Oxygen Service
- Special Connection Size
- Protective Rubber Cover, see page 121
- Max/Min Pointer, see page 122

*Lead times/minimums may apply

APPROXIMATE SHIPPING WEIGHTS/ BOX QUANTITIES

Dial Size	Est. Unit Weight	Box Qty
1 1/2"	0.20 lbs (0.10 kg)	200
2"	0.26 lbs (0.12 kg)	100
2 1/2"	0.34 lbs (0.15 kg)	125
3 1/2"	0.50 lbs (0.23 kg)	50
4 1/2"	0.60 lbs (0.27 kg)	50

Dial	Unit	A	B	C	D	E
1 1/2"	In.	1.64"	0.93"	0.65"	2.26"	1/8" NPT
	mm	42	24	17	57	
2"	In.	2.07"	1.06"	0.83"	2.83"	1/8" or 1/4" NPT
	mm	53	27	21	72	
2 1/2"	In.	2.5"	1.13"	0.88"	3.31"	1/4" NPT
	mm	63	29	22	84	
3 1/2"	In.	3.54"	1.12"	1.02"	4.49"	1/4" NPT
	mm	90	28	26	114	
4 1/2"	In.	4.79"	1.12"	1.10"	5.8"	1/4" NPT
	mm	122	29	28	147	

102D UTILITY GAUGE CENTER BACK MOUNT

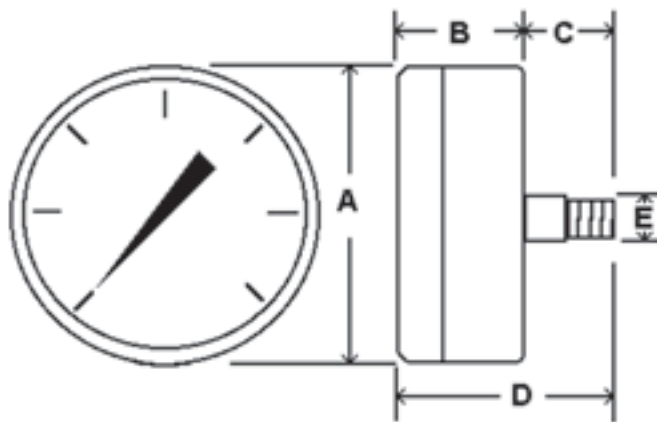


Utility gauge for commercial and industrial markets
Black steel case, chrome bezel, copper alloy internals

SPECIFICATIONS

Dial	1 ½" (40 mm), 2" (50 mm), 2 ½" (63 mm), 3 ½" (88 mm), 4 ½" (114 mm)
Case	Black steel, dry non-fillable
Wetted Parts	Copper alloy
Bezel	Chrome plated steel, fixed
Lens	Plastic
Pointer	Black aluminum
Connection	Center back mount 1 ½" dial = ⅛" NPT 2" dial = ⅛" or ¼" NPT 2 ½" dial = ¼" NPT 3 ½" dial = ¼" NPT 4 ½" dial = ¼" NPT
Scale	Standard: psi/BAR (x 100 = kPa)
Accuracy	3-2-3% of span, ASME B40.1 Grade B
Ambient Temp	-50° F to 160° F

Design meets or exceeds ASME B40.100 pressure gauge standard.



Dial	Unit	A	B	C	D	E
1 ½"	In.	1.64"	0.93"	0.63"	1.54"	⅛" NPT
	mm	42	24	16	39	
2"	In.	2.07"	1.03"	0.89"	1.90"	⅛" or ¼" NPT
	mm	53	26	23	48	
2 ½"	In.	2.5"	1.17"	0.90"	1.97"	¼" NPT
	mm	63	30	23	50	
3 ½"	In.	3.49"	1.22"	0.83"	2.02"	¼" NPT
	mm	89	31	21	51	
4 ½"	In.	4.5"	1.31"	0.94"	2.18"	¼" NPT
	mm	114	33	24	55	

AVAILABLE OPTIONS*

- Certificate of Accuracy, NIST traceable
- Custom Dial
- Anti-Vibration Movement, see page 109
- Glass Lens
- Stainless Steel Case
- Cleaned for Oxygen Service
- Special Connection Size
- Protective Rubber Cover, see page 121
- Max/Min Pointer, see page 122

*Lead times/minimums may apply

APPROXIMATE SHIPPING WEIGHTS/ BOX QUANTITIES

Dial Size	Est. Unit Weight	Box Qty
1 ½"	0.20 lbs (0.10 kg)	200
2"	0.26 lbs (0.13 kg)	100
2 ½"	0.34 lbs (0.17 kg)	125
3 ½"	0.45 lbs (0.22 kg)	50
4 ½"	0.65 lbs (0.30 kg)	25



103D UTILITY GAUGE U-CLAMP PANEL MOUNT

1 Utility gauge for commercial and industrial markets
Chrome case and bezel, copper alloy internals

SPECIFICATIONS

Dial	1 1/2" (40 mm), 2" (50 mm), 2 1/2" (63 mm), 3 1/2" (88 mm)
Case	Chrome plated steel, dry non-fillable (3 1/2" = painted steel with plastic, twist-off lens)
Wetted Parts	Copper alloy
Bezel	Chrome plated steel, fixed
Lens	Plastic
Pointer	Black aluminum
Connection	Center back mount with u-clamp 1 1/2" dial = 1/8" NPT 2" dial = 1/8" or 1/4" NPT 2 1/2" dial = 1/4" NPT 3 1/2" dial = 1/4" NPT
Scale	Standard: psi/BAR (x 100 = kPa)
Accuracy	3-2-3% of span, ASME B40.1 Grade B
Ambient Temp	-50° F to 160° F



AVAILABLE OPTIONS*

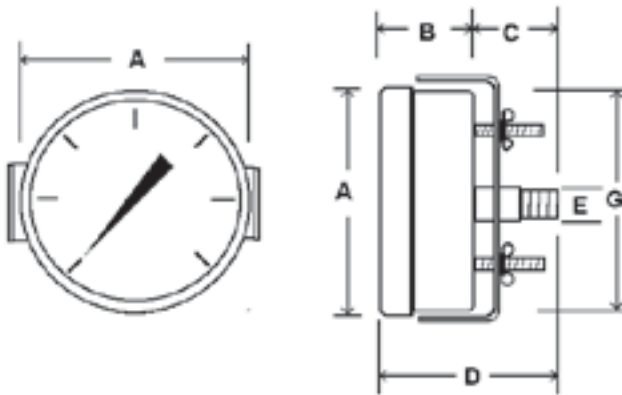
- Certificate of Accuracy, NIST traceable
- Custom Dial
- Anti-Vibration Movement, see page 109
- Glass Lens
- Stainless Steel Case
- Cleaned for Oxygen Service
- Special Connection Size
- Protective Rubber Cover, see page 121
- Max/Min Pointer, see page 122

*Lead times/minimums may apply

APPROXIMATE SHIPPING WEIGHTS/ BOX QUANTITIES

Dial Size	Est. Unit Weight	Box Qty
1 1/2"	0.20 lbs (0.10 kg)	100
2"	0.30 lbs (0.14 kg)	100
2 1/2"	0.35 lbs (0.18 kg)	100
3 1/2"	0.60 lbs (0.26 kg)	50

Design meets or exceeds ASME B40.100 pressure gauge standard.



Dial	Unit	A	B	C	D	G	E
1 1/2"	In.	1.84"	1.03"	0.63"	1.61"	1.61"	1/8" NPT
	mm	47	26	16	41	41	
2"	In.	2.31"	1.18"	0.73"	1.84"	2.04"	1/8" or 1/4" NPT
	mm	59	30	19	47	52	
2 1/2"	In.	2.68"	1.12"	0.76"	1.87"	2.44"	1/4" NPT
	mm	68	28	19	48	62	
3 1/2"	In.	3.98"	1.23"	0.67"	2.02"	3.59"	1/4" NPT
	mm	101	31	17	51	91	

104D UTILITY GAUGE FRONT FLANGE PANEL MOUNT

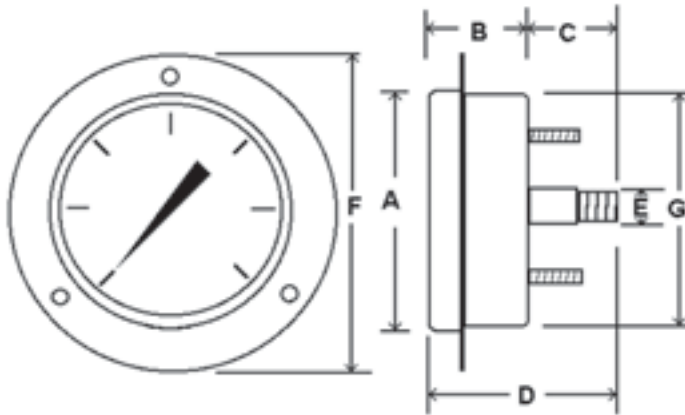


Utility gauge for commercial and industrial markets
Chrome case and bezel, copper alloy internals

SPECIFICATIONS

Dial	1 1/2" (40 mm), 2" (50 mm), 2 1/2" (63 mm), 3 1/2" (88 mm) - See 203D-354 p. 20
Case	Chrome plated steel, dry non-fillable
Wetted Parts	Copper alloy
Bezel	Chrome plated steel, fixed
Lens	Plastic
Pointer	Black aluminum
Connection	Center back mount with front flange Ships with u-clamp 1 1/2" dial = 1/8" NPT 2" dial = 1/8" or 1/4" NPT 2 1/2" dial = 1/4" NPT
Scale	Standard: psi/BAR (x 100 = kPa)
Accuracy	3-2-3% of span, ASME B40.1 Grade B
Ambient Temp	-50° F to 160° F

Design meets or exceeds ASME B40.100 pressure gauge standard.



Dial	Unit	A	B	C	D	F	G	E
1 1/2"	In.	1.84"	1.03"	0.63"	1.61"	2.23"	1.61"	1/8" NPT
	mm	47	26	16	41	57	41	
2"	In.	2.31"	1.18"	0.73"	1.84"	2.81"	2.04"	1/8" or 1/4" NPT
	mm	59	30	19	47	71	52	
2 1/2"	In.	2.68"	1.12"	0.76"	1.87"	3.47"	2.44"	1/4" NPT
	mm	68	28	19	48	88	62	

For complete flange dimensions, see page 123.



AVAILABLE OPTIONS*

- Certificate of Accuracy, NIST traceable
- Custom Dial
- Anti-Vibration Movement, see page 109
- Glass Lens
- Stainless Steel Case
- Cleaned for Oxygen Service
- Special Connection Size
- Protective Rubber Cover, see page 121
- Max/Min Pointer, see page 122

*Lead times/minimums may apply

APPROXIMATE SHIPPING WEIGHTS/ BOX QUANTITIES

Dial Size	Est. Unit Weight	Box Qty
1 1/2"	0.20 lbs (0.10 kg)	upon request
2"	0.35 lbs (0.16 kg)	upon request
2 1/2"	0.40 lbs (0.18 kg)	upon request



SE-100 SERIES UTILITY GAUGE

**1 Utility gauge for commercial and industrial markets
Black steel case and bezel, copper alloy internals**



STANDARD DIAL CONFIGURATIONS FOR SE-100 SERIES		
Dial Range	Figure Intervals	Graduation Intervals
30/0"hg Vac	5" hg	0.5" hg
0/15 psi	2 psi	0.1 psi
0/30 psi	5 psi	0.5 psi
0/60 psi	10 psi	1 psi
0/100 psi	20 psi	2 psi
0/160 psi	20 psi	2 psi
0/200 psi	40 psi	5 psi
0/300 psi	50 psi	5 psi
0/400 psi	50 psi	5 psi
0/600 psi	100 psi	10 psi

NOTE: Because of continuing improvements, increments/specifications are subject to change without notice. Stock ranges vary by dial size and configuration. Consult PIC Gauges for availability.

SE-101D UTILITY GAUGE LOWER MOUNT

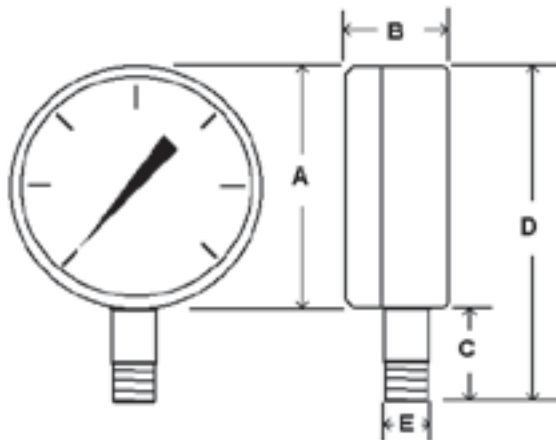


Utility gauge for commercial and industrial markets
Black steel case and bezel, copper alloy internals

SPECIFICATIONS

Dial	1 ½" (40 mm), 2" (50 mm), 2 ½" (63 mm)
Case	Black steel, dry non-fillable
Wetted Parts	Copper alloy
Bezel	Black painted steel, fixed
Lens	Glass
Pointer	Black aluminum
Connection	Lower mount 1 ½" dial = ⅛" NPT 2" dial = ⅛" or ¼" NPT 2 ½" dial = ¼" NPT
Scale	Standard: psi/BAR (x 100 = kPa)
Accuracy	3-2-3% of span, ASME B40.1 Grade B
Ambient Temp	-50° F to 160° F

Design meets or exceeds ASME B40.100 pressure gauge standard.



Dial	Unit	A	B	C	D	E
1 ½"	In.	1.64"	0.93"	0.63"	2.27"	⅛" NPT
	mm	42	24	16	58	
2"	In.	2.07"	1.03"	0.83"	2.90"	⅛" or ¼" NPT
	mm	53	26	21	74	
2 ½"	In.	2.5"	1.17"	0.86"	3.36"	¼" NPT
	mm	63	30	22	26	

AVAILABLE OPTIONS*

- Certificate of Accuracy, NIST traceable
- Custom Dial
- Anti-Vibration Movement, see page 109
- Cleaned for Oxygen Service
- Special Connection Size
- Protective Rubber Cover, see page 121
- Plastic Lens
- Max/Min Pointer, see page 122

*Lead times/minimums may apply

APPROXIMATE SHIPPING WEIGHTS/ BOX QUANTITIES

Dial Size	Est. Unit Weight	Box Qty
1 ½"	0.10 lbs (0.06 kg)	100
2"	0.20 lbs (0.10 kg)	100
2 ½"	0.30 lbs (0.14 kg)	100



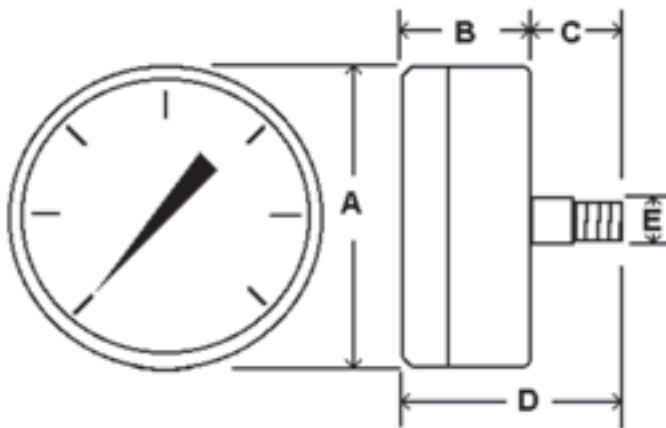
SE-102D UTILITY GAUGE CENTER BACK MOUNT

1 Utility gauge for commercial and industrial markets Black steel case and bezel, copper alloy internals

SPECIFICATIONS

Dial	1 1/2" (40 mm), 2" (50 mm), 2 1/2" (63 mm)
Case	Black steel, dry non-fillable
Wetted Parts	Copper alloy
Bezel	Black painted steel, fixed
Lens	Glass
Pointer	Black aluminum
Connection	Center back mount 1 1/2" dial = 1/8" NPT 2" dial = 1/8" or 1/4" NPT 2 1/2" dial = 1/4" NPT
Scale	Standard: psi/BAR (x 100 = kPa)
Accuracy	3-2-3% of span, ASME B40.1 Grade B
Ambient Temp	-50° F to 160° F

Design meets or exceeds ASME B40.100 pressure gauge standard.



Dial	Unit	A	B	C	D	E
1 1/2"	In.	1.64"	0.93"	0.63"	1.54"	1/8" NPT
	mm	42	24	16	39	
2"	In.	2.07"	1.03"	0.83"	1.86"	1/8" or 1/4" NPT
	mm	53	26	21	47	
2 1/2"	In.	2.5"	1.17"	0.90"	1.97"	1/4" NPT
	mm	63	30	23	50	

AVAILABLE OPTIONS*

- Certificate of Accuracy, NIST traceable
- Custom Dial
- Anti-Vibration Movement, see page 109
- Cleaned for Oxygen Service
- Special Connection Size
- Protective Rubber Cover, see page 121
- Plastic Lens
- Max/Min Pointer, see page 122

*Lead times/minimums may apply

APPROXIMATE SHIPPING WEIGHTS/ BOX QUANTITIES

Dial Size	Est. Unit Weight	Box Qty
1 1/2"	0.15 lbs (0.06 kg)	100
2"	0.25 lbs (0.10 kg)	100
2 1/2"	0.37 lbs (0.17 kg)	100

SEP-100 UTILITY GAUGE PLASTIC CASE



Plastic case utility gauge for commercial and industrial markets
Black plastic case, copper alloy internals



STANDARD DIAL CONFIGURATIONS FOR SEP-100 SERIES		
Dial Range	Figure Intervals	Graduation Intervals
30/0"hg Vac	5" hg	0.5" hg
0/15 psi	2 psi	0.1 psi
0/30 psi	5 psi	0.5 psi
0/60 psi	10 psi	1 psi
0/100 psi	20 psi	2 psi
0/160 psi	20 psi	2 psi
0/200 psi	40 psi	5 psi
0/300 psi	50 psi	5 psi

NOTE: Because of continuing improvements, increments/specifications are subject to change without notice. Stock ranges vary by dial size and configuration. Consult PIC Gauges for availability.



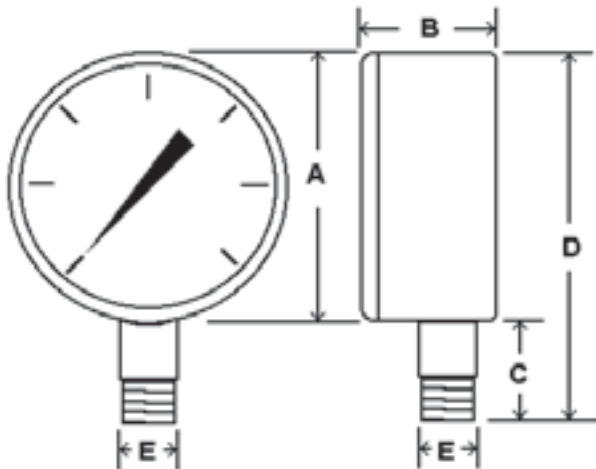
SEP-101D UTILITY GAUGE PLASTIC CASE

1 Plastic case utility gauge for commercial and industrial markets Black plastic case, copper alloy internals

SPECIFICATIONS

Dial	2" (50 mm)
Case	Plastic, dry non-fillable
Wetted Parts	Copper alloy
Lens	Plastic
Pointer	Black aluminum
Connection	Lower mount 2" dial = 1/8" or 1/4" NPT
Scale	Standard: psi/BAR (x 100 = kPa)
Accuracy	3-2-3% of span, ASME B40.1 Grade B
Ambient Temp	-40° F to 140° F

Design meets or exceeds ASME B40.100 pressure gauge standard.



Dial	Unit	A	B	C	D	E
2"	In.	2.09"	1.14"	0.83"	2.83"	1/8" or 1/4"
	mm	53	29	21	72	NPT

AVAILABLE OPTIONS*

- Certificate of Accuracy, NIST traceable
- Custom Dial
- Anti-Vibration Movement, see page 109
- Cleaned for Oxygen Service
- Special Connection Size
- Protective Rubber Cover, see page 121
- Max/Min Pointer, see page 122

*Lead times/minimums may apply

APPROXIMATE SHIPPING WEIGHTS/ BOX QUANTITIES

Dial Size	Est. Unit Weight	Box Qty
2"	0.15 lbs (0.08 kg)	100

SEP-102D UTILITY GAUGE PLASTIC CASE

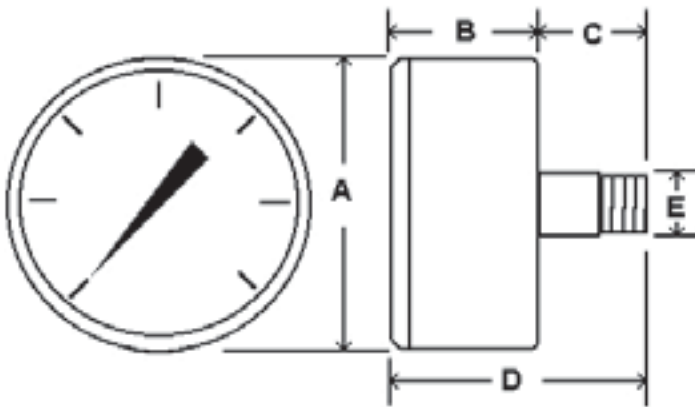


Plastic case utility gauge for commercial and industrial markets
Black plastic case, copper alloy internals

SPECIFICATIONS

Dial	2" (50 mm)
Case	Plastic, dry non-fillable
Wetted Parts	Copper alloy
Lens	Plastic
Pointer	Black aluminum
Connection	Center back mount 2" dials = 1/4" NPT
Scale	Standard: psi/BAR (x 100 = kPa)
Accuracy	3-2-3% of span, ASME B40.1 Grade B
Ambient Temp	-40° F to 140° F

Design meets or exceeds ASME B40.100 pressure gauge standard.



Dial	Unit	A	B	C	D	E
2"	In.	2.11"	1.06"	0.71"	1.77"	1/4" NPT
	mm	54	27	18	45	

AVAILABLE OPTIONS*

- Certificate of Accuracy, NIST traceable
- Custom Dial
- Anti-Vibration Movement, see page 109
- Cleaned for Oxygen Service
- Special Connection Size
- Protective Rubber Cover, see page 121
- Max/Min Pointer, see page 122

*Lead times/minimums may apply

APPROXIMATE SHIPPING WEIGHTS/ BOX QUANTITIES

Dial Size	Est. Unit Weight	Box Qty
2"	0.20 lbs (0.08 kg)	100