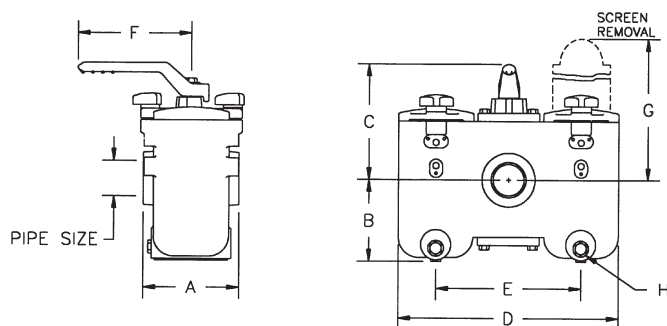
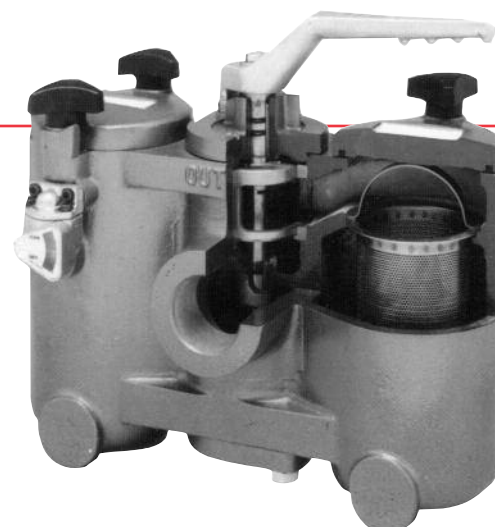


# DUPLEX STRAINERS

## Screwed

STYLE	BODY	DIVERTER
DPXS	CAST IRON	BRONZE
WDPXS	CAST IRON	IRON
CDPXS	CAST IRON	STAINLESS STEEL
BDPXS	CAST BRONZE	BRONZE
SDPXS	CAST CARBON STEEL	BRONZE
SCDPXS	CAST CARBON STEEL	STAINLESS STEEL
SSDPXS	CAST STAINLESS STEEL	STAINLESS STEEL



### STANDARD SCREENS SUPPLIED

PIPE SIZE	SCREEN PERFORATION	OPEN AREA
¾" to 1½"	⅛"	30%
2", 2½"	⅙"	43%

Options: Other perforations, meshes, and screen materials are available.

## APPLICATIONS

Duplex strainers are used in continuous flow applications where the process can not be shut down for cleaning. Examples: lubrication systems, industrial or marine oil burners, chemical plants, cooling lines in power plants, compressors, condensers, and ink supply lines to printing presses. Duplex strainers are also specified for water lines to cooling towers and pumping stations where water is taken from lakes or rivers.

## WORKING PRESSURE—NON SHOCK

Not recommended for steam service

STYLE DPXS, WDPXS  
WATER, OIL, GAS...200 PSI-150°F  
BODY AND COVERS: ASTM A 126, CLASS B

STYLE CDPXS  
WATER, OIL, GAS...200 PSI-120°F  
BODY AND COVERS: ASTM A 126, CLASS B

STYLE BDPXS  
WATER, OIL, GAS...225 PSI-150°F  
BODY AND COVERS: ASTM B62

STYLE SDPXS, SCDPXS  
WATER, OIL, GAS...285 PSI-100°F  
BODY AND COVERS: ASTM A 216, GRADE WCB

STYLE SSDPXS  
WATER, OIL, GAS...275 PSI-100°F  
BODY AND COVERS: Type 316 A 351, GRADE CF8M

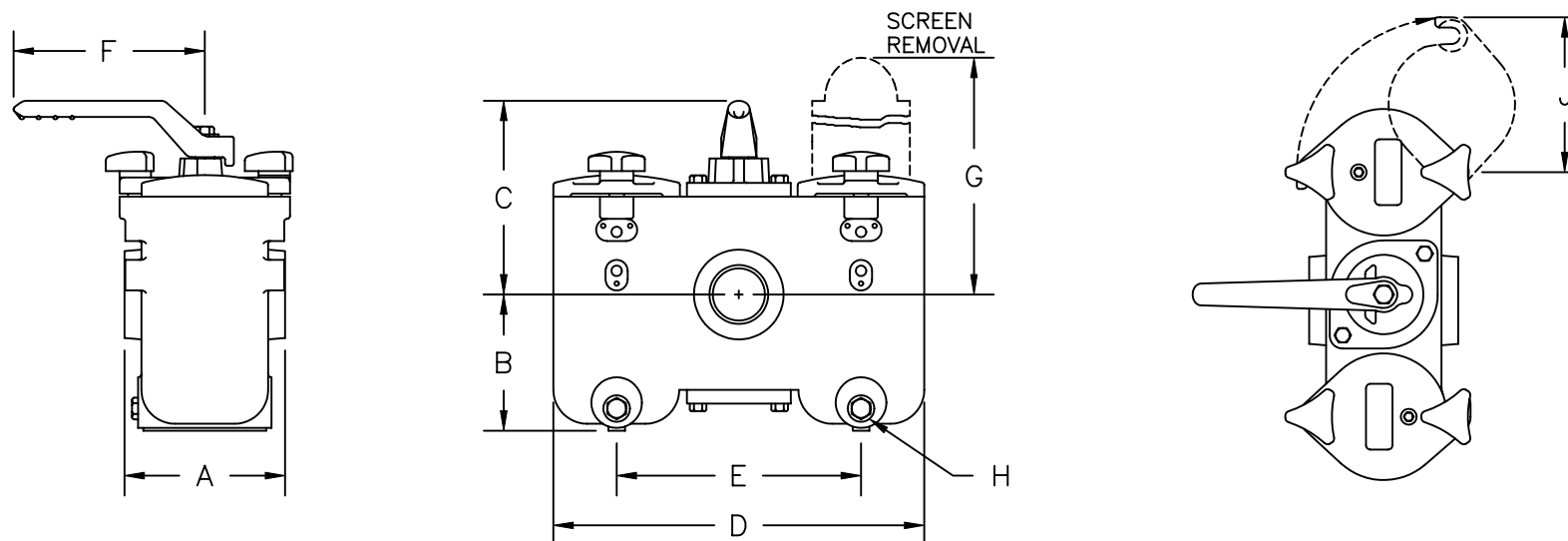
## DIMENSIONS & SHIPPING WEIGHTS (APPROXIMATE)

PIPE SIZE	A	B	C	D	E	F	G	H	WEIGHT LBS.	
									IRON BODY	OTHERS
¾"	4⅝"	4⅝"	5⅝"	10⅝"	6⅞"	6⅝"	8⅞"	½"	29	35
1"	4⅝"	4⅝"	5⅝"	10⅝"	6⅞"	6⅝"	8⅞"	½"	29	35
1¼"	5⅝"	5⅝"	6⅝"	11⅝"	7⅞"	6⅝"	12"	½"	42	51
1½"	5⅝"	5⅝"	6⅝"	11⅝"	7⅞"	6⅝"	12"	½"	42	51
2"	7⅞"	6⅝"	8⅝"	16⅝"	11"	8⅝"	13⅞"	½"	108	132
2½"	7⅞"	6⅝"	8⅝"	16⅝"	11"	8⅝"	13⅞"	½"	108	132

Certified Dimensional Sheets Available.

[Click Here](#)  
For Your Free Quote

DRAWING NO.  
73135-AL



PIPE SIZE	A	B	C	D	E	F	G	H	J	WEIGHTS
3/4"	4-3/4	4-1/8	5-7/8	10-5/8	6-11/16	6-7/8	8-11/16	1/2	4-7/8	29
1"	4-3/4	4-1/8	5-7/8	10-5/8	6-11/16	6-7/8	8-11/16	1/2	4-7/8	29
1-1/4"	5-3/8	5-3/4	6-7/8	11-3/16	7-1/4	6-7/8	12	1/2	4-7/8	42
1-1/2"	5-3/8	5-3/4	6-7/8	11-3/16	7-1/4	6-7/8	12	1/2	4-7/8	42
2"	7-1/4	6-1/8	8-3/4	16-3/4	11	8-1/4	13-13/16	1/2	7	110
2-1/2"	7-1/4	6-1/8	8-3/4	16-3/4	11	8-1/4	13-13/16	1/2	7	110

### PARTS LIST

BODY	CAST IRON
SLEEVE	BRONZE
INNER VALVES	BRONZE
INTERNAL MACHINE PARTS	STAINLESS STEEL
BASKETS	STAINLESS STEEL
DRAIN PLUGS	BRASS
O-RINGS	NITRILE
MAX. WORKING PRESSURE - 200PSI AT 150°F	

**KECKLEY**

STYLE DPXS DUPLEX STRAINER

SCREWED (NPT) CONNECTIONS

MAT'L: AS NOTED

REQ. —

DRAWING NO.  
73135-AL

PART NO.

SCALE: NTS

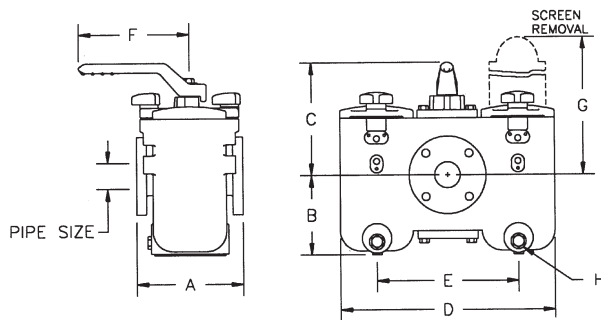
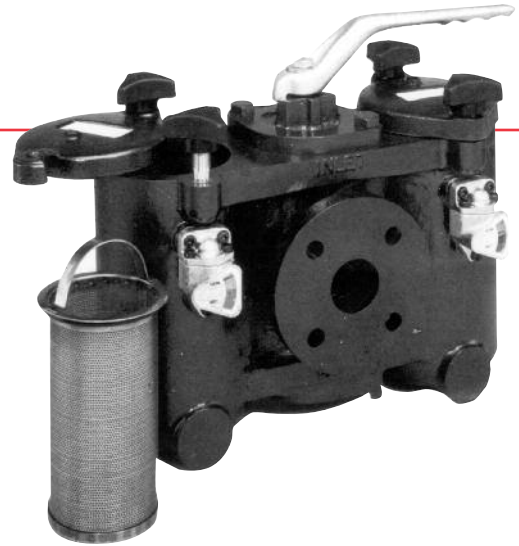
DATE: 8/14/96

DR. BY    REW

# DUPLEX STRAINERS

## Flanged

STYLE	BODY	DIVERTER
DPXF	CAST IRON-125 lb.	BRONZE
WDPXF	CAST IRON-125 lb.	IRON
CDPXF	CAST IRON-125 lb.	STAINLESS STEEL
BDPXF	CAST BRONZE-150 lb.	BRONZE
SDPXF	CAST CARBON STEEL-150 lb.	BRONZE
SCDPXF	CAST CARBON STEEL-150 lb.	STAINLESS STEEL
SSDPXF	CAST STAINLESS STEEL-150 lb.	STAINLESS STEEL



### STANDARD SCREENS SUPPLIED

PIPE SIZE	SCREEN PERFORATION	OPEN AREA
1" to 1½"	⅛"	30%
2" to 8"	⅛"	43%

Options: Other perforations, meshes, and screen materials are available.

## APPLICATIONS

Duplex strainers are used in continuous flow applications where the process can not be shut down for cleaning. Examples: lubrication systems, industrial or marine oil burners, chemical plants, cooling lines in power plants, compressors, condensers, and ink supply lines to printing presses. Duplex strainers are also specified for water lines to cooling towers, and pumping stations where water is taken from lakes or rivers.

## WORKING PRESSURE—NON SHOCK

Not recommended for steam service

STYLE DPXF, WDPXF  
WATER, OIL, GAS...200 PSI-150°F  
BODY AND COVERS: ASTM A 126, CLASS B

STYLE CDPXF  
WATER, OIL, GAS...200 PSI-120°F  
BODY AND COVERS: ASTM A 126, CLASS B

STYLE BDPXF  
WATER, OIL, GAS...225 PSI-150°F  
BODY AND COVERS: ASTM B62

STYLE SDPXF, SCDPXF  
WATER, OIL, GAS...285 PSI-100°F  
BODY AND COVERS: ASTM A 216, GRADE WCB

STYLE SSDPXF  
WATER, OIL, GAS...275 PSI-100°F  
BODY AND COVERS: Type 316 A 351, GRADE CF8M

## DIMENSIONS & SHIPPING WEIGHTS (APPROXIMATE)

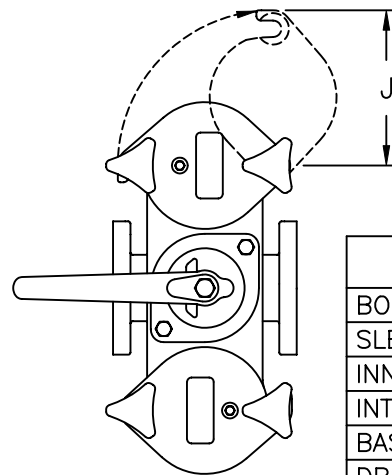
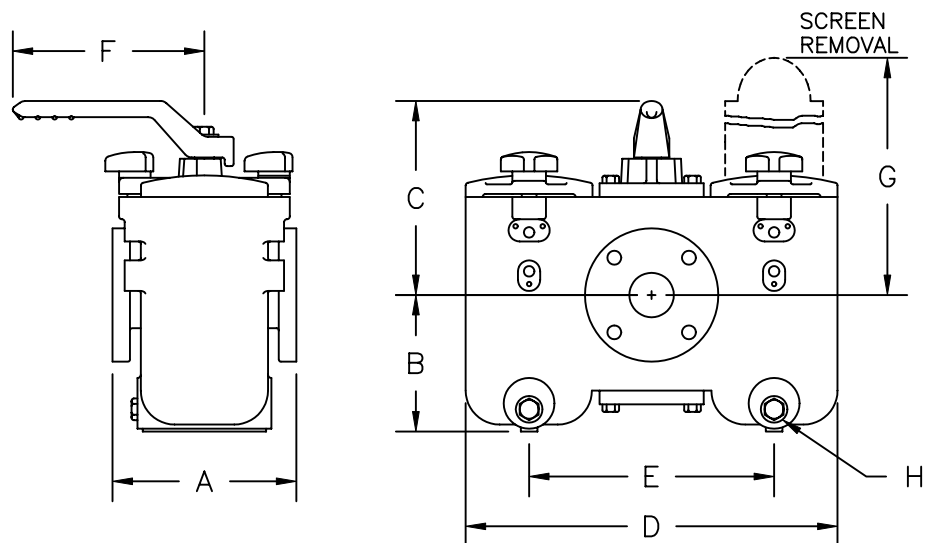
PIPE SIZE	A	B	C	D	E	F	G	H	WEIGHT LBS.	
									IRON BODY	OTHERS
1"	6	4⅞	5⅞	10⅞	6⅞	6⅞	8⅞	½	38	44
1½"	6⅞	5¾	6⅞	11⅞	7¼	6⅞	12	½	53	62
2"	8¼	6⅞	8¾	16¾	11	8¾	13⅞	½	117	139
2½"	8¼	6⅞	8¾	16¾	11	8¾	13⅞	½	119	141
3"	10½	8¼	10⅞	19¼	13	9¾	17¾	½	190	225
4"	12½	10⅞	11⅞	21¼	15	9¾	22¾	½	282	302
* 5"	18¾	10⅞	13	23½	16	15	22¾	½	619	663
* 6"	18¾	10⅞	13	23½	16	15	22¾	½	629	673
8"	22	20½	21⅞	40¾	27⅞	19⅞	47¾	½	1632	1985

\* 5" AND 6" DUPLEX STRAINERS HAVE A FOUR BASKET DESIGN.

Certified Dimensional Sheets Available.

[Click Here](#)  
For Your Free Quote

DRAWING NO.  
73134-AL



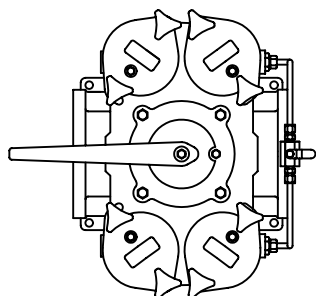
### PARTS LIST

BODY	CAST IRON
SLEEVE	BRONZE
INNER VALVES	BRONZE
INTERNAL MACHINE PARTS	STAINLESS STEEL
BASKETS	STAINLESS STEEL
DRAIN PLUGS	BRASS
O-RINGS	NITRILE
MAX. WORKING PRESSURE - 200PSI AT 150°F	

PIPE SIZE	A	B	C	D	E	F	G	H	J	WEIGHTS
1"	6	4-1/8	5-7/8	10-5/8	6-11/16	6-7/8	8-11/16	1/2	4-7/8	38
1-1/2"	6-7/8	5-3/4	6-7/8	11-3/16	7-1/4	6-7/8	12	1/2	4-7/8	53
2"	8-1/4	6-1/8	8-3/4	16-3/4	11	8-1/4	13-13/16	1/2	7	117
2-1/2"	8-1/4	6-1/8	8-3/4	16-3/4	11	8-1/4	13-13/16	1/2	7	119
3"	10-1/2	8-1/4	10-1/16	19-1/4	13	9-7/8	17-3/4	1/2	7-3/4	190
4"	12-1/2	10-7/16	11-9/16	21-1/4	15	9-7/8	22-5/8	1/2	7-3/4	282
5"**	18-5/8	10-9/16	13	23-1/2	16	15	22-5/8	1/2	7-3/4	619
6"**	18-5/8	10-9/16	13	23-1/2	16	15	22-5/8	1/2	7-3/4	629
8"	22	20-1/2	21-11/16	40-1/8	27-9/16	19-11/16	47-5/8	1/2	BOLTED COVER	1632

\*\* 5" & 6" DUPLEX STRAINERS HAVE  
(2) BASKETS PER CHAMBER FOR  
A TOTAL OF (4) BASKETS

5", 6" & 8" SIZES HAVE STANDARD  
MOUNTING PADS AND PRESSURE  
EQUALIZING VALVES.



# KECKLEY

STYLE DPXF DUPLEX STRAINER

125# FLANGED CONNECTIONS

MAT'L: AS NOTED

REQ. —

DRAWING NO.  
73134-AL

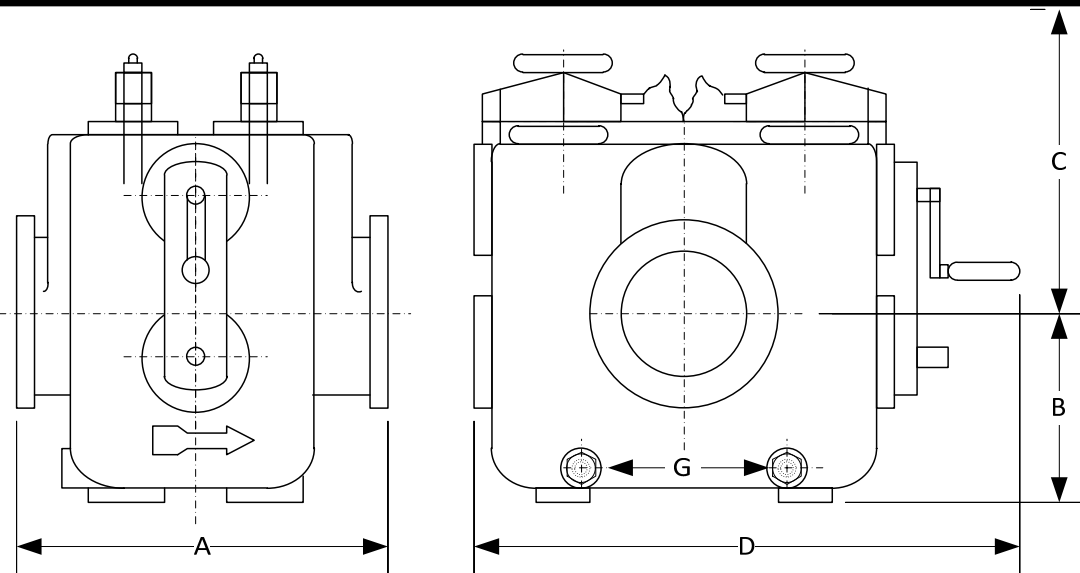
PART NO.

SCALE: NTS

DATE: 8/14/96

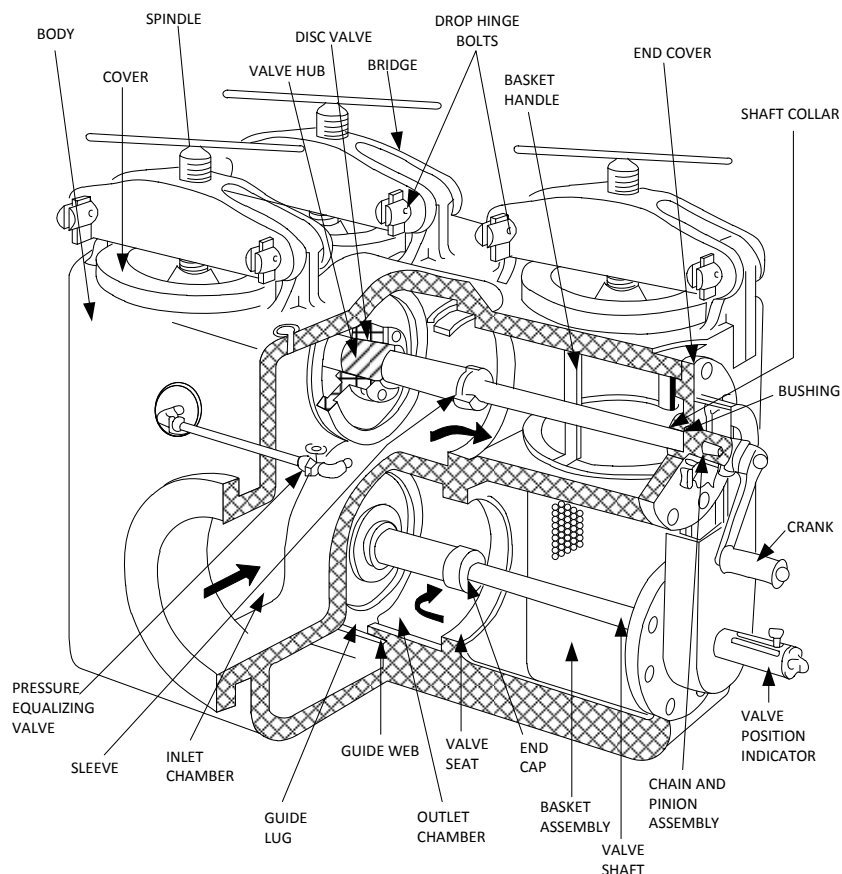
DR. BY REW

DRAWING NO.  
AL 73215



BODY PRESSURE & TEMPERATURE RATINGS – NON SHOCK		
NOM. RATING	MEDIA	10" to 20"
125# (STANDARD FLANGE)	W.O.G.	150 PSI @ 100°F

SIZE	DIMENSIONS (in)					Basket Area	WEIGHT (lbs)
	A	B	C	D	G BSPT	in <sup>2</sup>	
10	40.35	14.02	44.02	59.25	1-1/2"	1160	2987
12	40.51	15.00	44.02	59.25	1-1/2"	1160	3078
16	49.61	22.00	65.98	68.27	1-1/2"	2000	5260
18	50	23.00	65.00	68.27	1-1/2"	2000	5380
20	50	24.02	65.00	68.27	1-1/2"	2000	5415



**KECKLEY**

DRAWING NO.  
AL 73215

DIMENSIONAL ASSEMBLY

PART NO.

125# Flange Style DPXF, Cast Iron

SCALE: NTS

Duplex Basket Strainer w/ 304 ss screen

DATE: 01/29/2014

MAT'L: (As Noted Above)

REQ. ---

DR. BY DSF

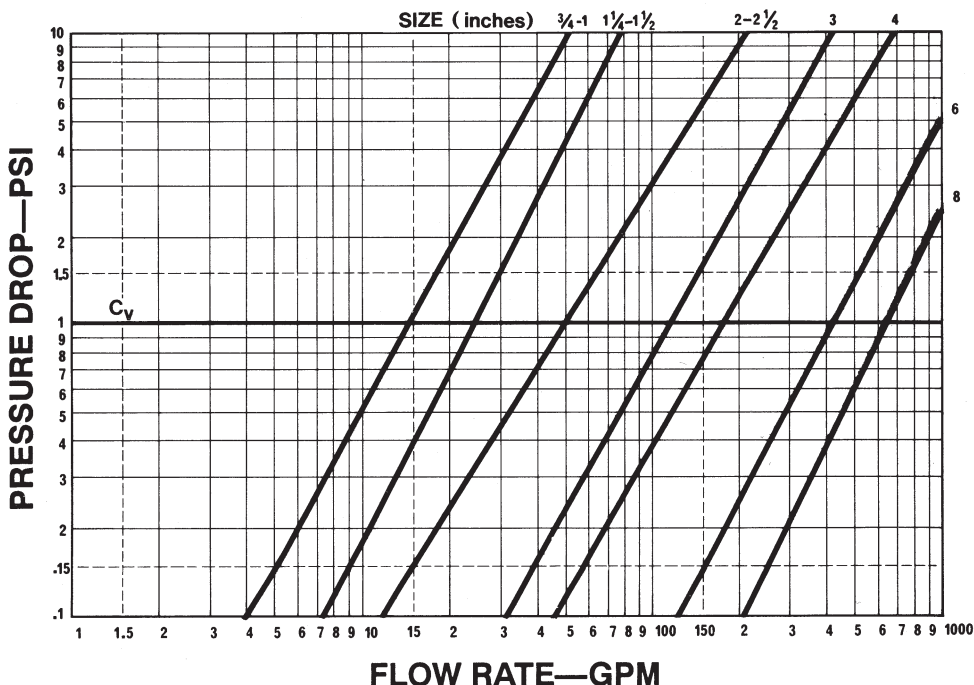
# RATIOS: Net Free Area To Pipe Area

## STANDARD PERFORATIONS AND WIRE MESH\*

STRAINER SIZE (ALL STYLES)	TOTAL SCREEN AREA (SQ. IN.)	INSIDE AREA PIPE (SQ. IN.)	.033	.045	.0625	.094	.125	.1875	.250	20	40	60	80	100	SIZE
			$\frac{1}{32}$	$\frac{3}{64}$	$\frac{1}{16}$	$\frac{3}{32}$	$\frac{1}{8}$	$\frac{3}{16}$	$\frac{1}{4}$	Mesh	Mesh	Mesh	Mesh	Mesh	
$\frac{3}{4}$	29	.533	15.78	17.96	16.32	19.59	23.40	27.75	31.56	12.12	8.42	7.14	7.37	8.42	$\frac{3}{4}$
1	29	.864	9.73	11.08	10.07	12.08	14.43	17.12	19.47	7.48	5.19	4.40	4.55	5.19	1
1 $\frac{1}{4}$	42	1.496	8.14	9.27	8.42	10.11	12.07	14.32	16.28	6.25	4.35	3.68	3.80	4.35	1 $\frac{1}{4}$
1 $\frac{1}{2}$	42	2.036	5.98	6.81	6.19	7.43	8.87	10.52	11.97	4.60	3.20	2.71	2.80	3.14	1 $\frac{1}{2}$
2	75	3.355	6.48	7.38	6.71	8.05	9.61	11.40	12.97	4.98	3.46	2.93	3.03	3.46	2
2 $\frac{1}{2}$	75	4.788	4.54	5.17	4.70	5.64	6.74	7.99	9.09	3.49	2.43	2.06	2.12	2.43	2 $\frac{1}{2}$
3	111	7.393	4.35	4.96	4.50	5.41	6.46	7.66	8.71	3.35	2.33	1.97	2.03	2.33	3
4	150	12.73	3.42	3.89	3.54	4.24	5.07	6.01	6.83	2.62	1.82	1.54	1.60	1.82	4
6	350	28.89	3.51	4.00	3.63	4.36	5.21	6.18	7.03	2.70	1.88	1.59	1.64	1.88	6
8	618	50.00	3.58	4.08	3.71	4.45	5.32	6.30	7.17	2.75	1.91	1.62	1.67	1.91	8
% OPEN AREA			29%	33%	30%	36%	43%	51%	58%	51.8%	36%	30.5%	31.5%	36%	

\*Wire mesh screens are reinforced with a  $\frac{1}{8}$ " perforated sheet.

# PRESSURE DROP CHART



## NOTE:

These charts are based on flow of clean water through .125" perforated baskets. For multiplying factors for clogged screens, see page 6.

## CORRECTION FACTORS

(for mesh lined baskets):  
Multiply pressure drops shown in chart at left by the following:

- 40 mesh x 1.2
- 60 mesh x 1.4
- 80 mesh x 1.6
- 100 mesh x 1.7

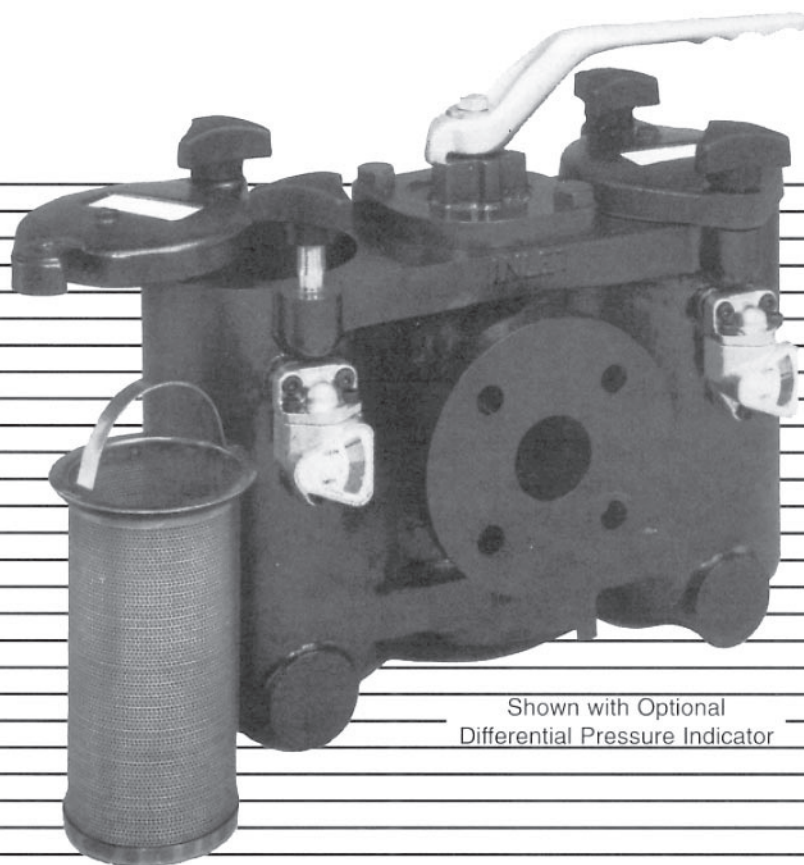


O&M-DPX98

# DUPLEX STRAINERS

**Installation, Operation, and  
Maintenance Instructions**

**NO QUESTION. WE HAVE THE ANSWERS.**



Shown with Optional  
Differential Pressure Indicator



## INSTALLATION

When fitting strainers into a pipeline, take care not to cause stress to the body of the strainer. Allow for adequate support of the weight of the strainer. Be sure to leave enough room for removal of the baskets for cleaning. The strainer faces are marked as Inlet and Outlet to ensure proper installation. These strainers are for horizontal flow only. All strainers are for pressure applications and are suitable for suction applications with a higher back up pressure. (header tank)

## OPERATION

Prior to start-up, check that the proper baskets are in place and that all covers are seal tight. Do not check baskets when strainer is pressurized. The strainer handle covers the chamber in use. The diverter valve always allows flow through the strainer. Although the valve will stop flow through one chamber, it is not a shut off valve.

Moving the handle 180 degrees changes the chamber in use. Do not open either chamber with the handle in the central position. It is not recommended to operate the strainer with the handle in the central position. There is no pressure drop advantage with this position.

## OPTIONAL EQUALIZING SYSTEM

A valve and connecting tubing are fitted between the two chambers. The valve must be opened before any attempt is made to move the diverter

handle. **WARNING:** The valve must be re-closed after changeover. NO attempt must be made to remove drain plug or open the basket chamber when the valve is open.

## CLEANING (see Diagram 1)

To clean Chamber A, move diverter handle to Position 3. As this strainer does not incorporate a tight shut off valve, the operator should be aware of possible leakage during cleaning. Carefully release drain plug in Chamber A allowing pressure to relieve before completely removing to empty the chamber.

Remove cover nuts, lift out the basket and remove the sediment within. Wash basket thoroughly and flush chamber if necessary. (Protect bottom of chamber below basket from contamination as this is the clean part of the strainer.)

Replace drain plug and washer. Check condition of O-rings in the cover and on the basket (if present) and replace if necessary. Place the basket in the chamber, making sure that the handle protrudes slightly above the strainer body. This guarantees a tight fitting basket when the cover is closed.

Use caution to lift cover before swinging it so as not to damage the O-ring. Turn the diverter handle to give partial flow into the cleaned chamber. Next, open the bleed screw to vent off air. Once vented, re-close the bleed screw and return the diverter handle to Position 3. If an equalizing valve is fitted, it can be used to vent the cleaned

chamber after the cover has been tightened. The valve must be closed after performing this operation. The cleaned chamber is now ready for use.

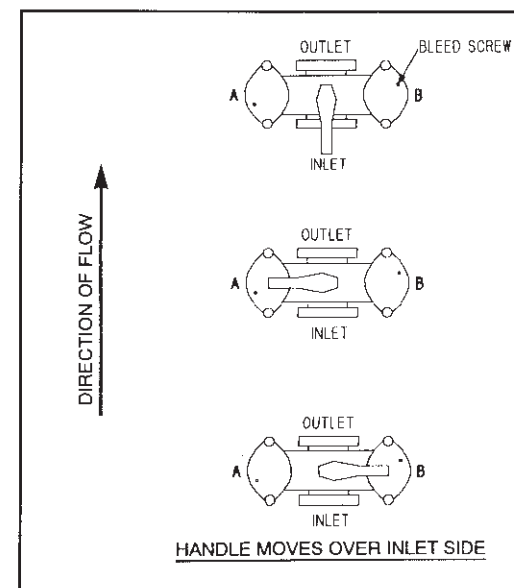
The same procedure applies to Chamber B except that the diverter handle is turned to Position 2.

Baskets have a safe differential pressure of approximately 30 PSI but it is recommended that you not exceed 20 PSI. This is because of the rapid rate of increase in pressure drop as the basket becomes clogged. Exceeding the differential pressure of 30 PSI can cause damage to the baskets.

## REMOVAL

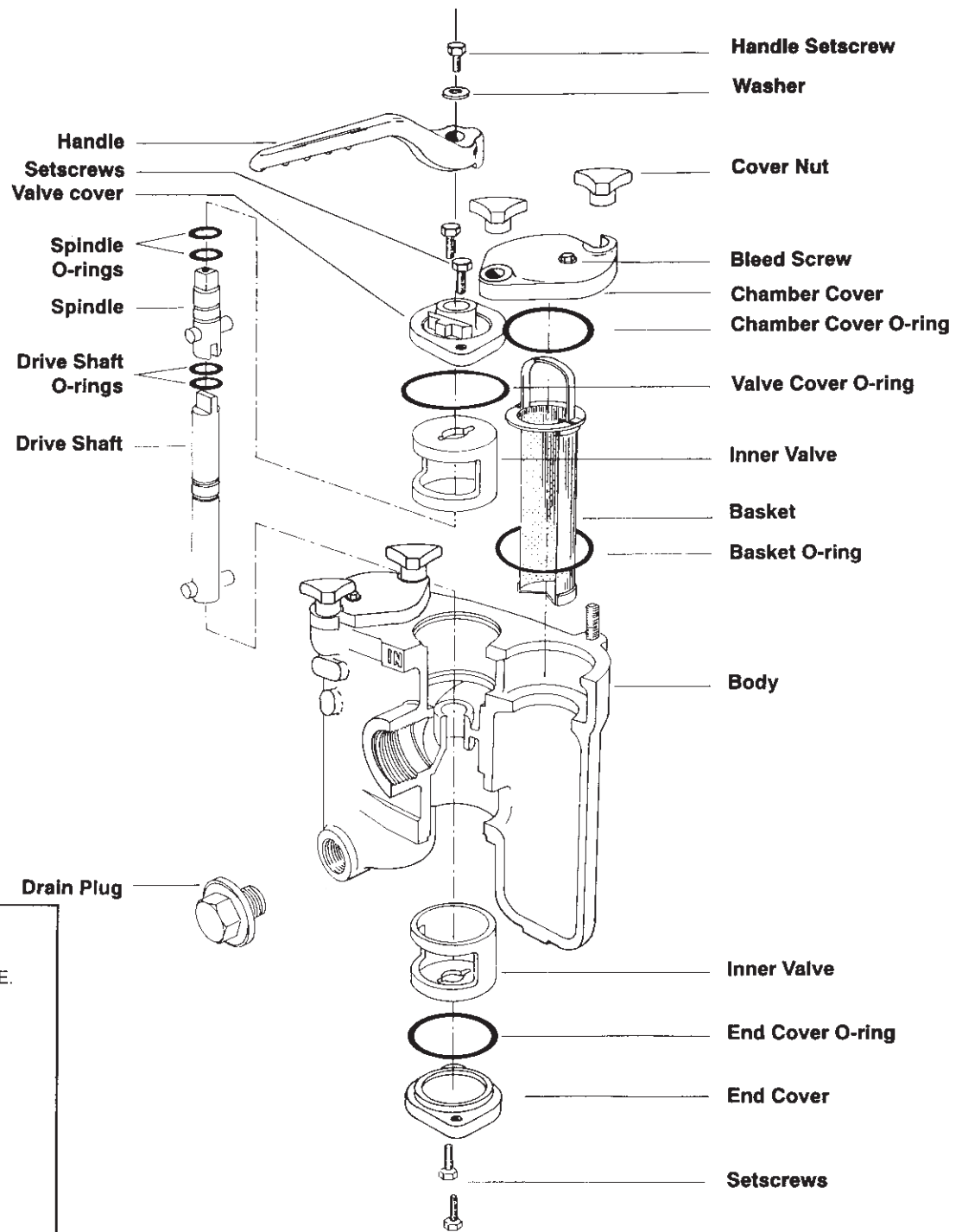
To remove a strainer, first isolate from the supply and any back-flow. Next, drain and disconnect.

## DIAGRAM 1





# PARTS LIST



## POSITION 1

BOTH CHAMBERS IN USE.  
DO NOT OPEN COVERS.

## POSITION 2

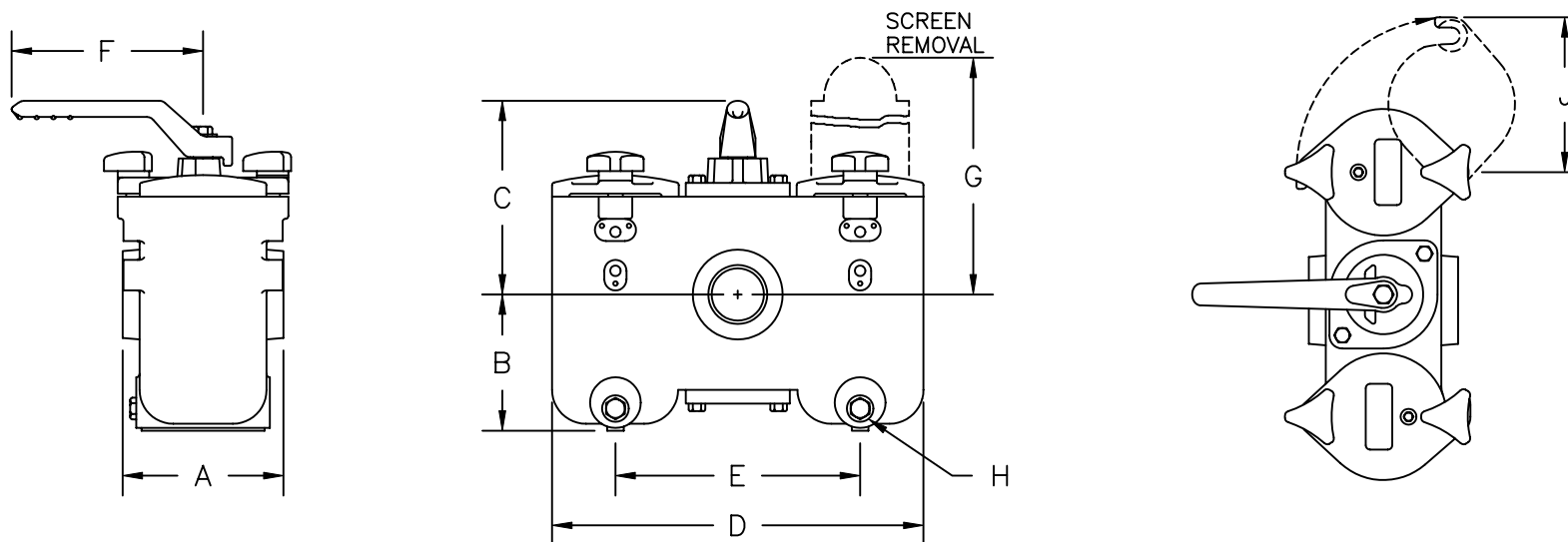
CHAMBER A IN USE.  
OPEN B FOR CLEANING.

## POSITION 3

CHAMBER B IN USE.  
OPEN A FOR CLEANING.

5 & 6" Size - Four basket design not shown.  
8" Size - Bolted cover.

DRAWING NO.  
73145-AL

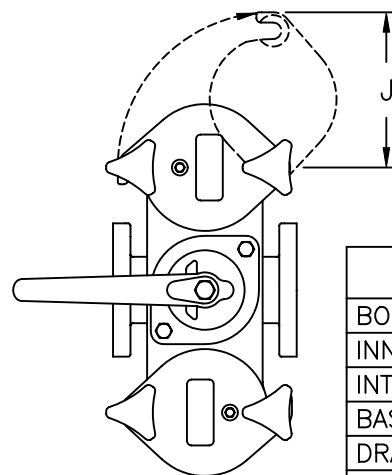
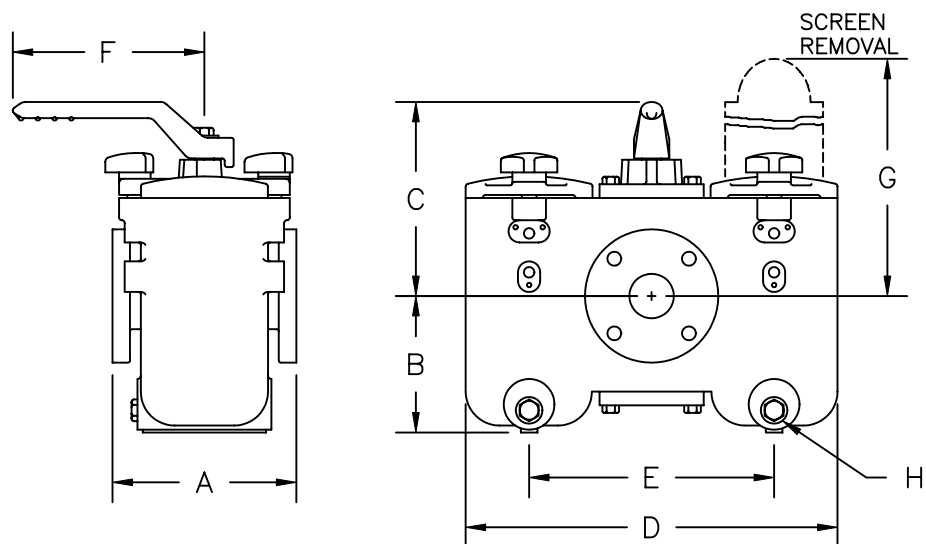


PIPE SIZE	A	B	C	D	E	F	G	H	J	WEIGHTS
3/4"	4-3/4	4-1/8	5-7/8	10-5/8	6-11/16	6-7/8	8-11/16	1/2	4-7/8	35
1"	4-3/4	4-1/8	5-7/8	10-5/8	6-11/16	6-7/8	8-11/16	1/2	4-7/8	35
1-1/4"	5-3/8	5-3/4	6-7/8	11-3/16	7-1/4	6-7/8	12	1/2	4-7/8	51
1-1/2"	5-3/8	5-3/4	6-7/8	11-3/16	7-1/4	6-7/8	12	1/2	4-7/8	51
2"	7-1/4	6-1/8	8-3/4	16-3/4	11	8-1/4	13-13/16	1/2	7	132
2-1/2"	7-1/4	6-1/8	8-3/4	16-3/4	11	8-1/4	13-13/16	1/2	7	132

PARTS LIST	
BODY	BRONZE
INNER VALVES	BRONZE
INTERNAL MACHINE PARTS	PHOS. BRONZE
BASKETS	STAINLESS STEEL
DRAIN PLUGS	PHOS. BRONZE
O-RINGS	NITRILE
MAX. WORKING PRESSURE - 225PSI AT 150°F	

 <b>KECKLEY</b>		DRAWING NO.
3400 CLEVELAND SKOKIE ILLINOIS		73145-AL
STYLE BDPXS DUPLEX STRAINER		PART NO.
SCREWED (NPT) CONNECTIONS		SCALE: NTS
		DATE:8/14/96
MAT'L: AS NOTED	REQ. —	DR.BY      REW

DRAWING NO.  
73144-AL



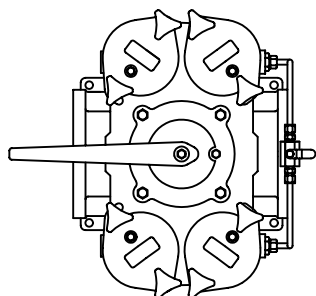
# PARTS LIST

BODY	BRONZE
INNER VALVES	BRONZE
INTERNAL MACHINE PARTS	PHOS. BRONZE
BASKETS	STAINLESS STEEL
DRAIN PLUGS	PHOS. BRONZE
O-RINGS	NITRILE
MAX. WORKING PRESSURE - 225PSI AT 150°F	

PIPE SIZE	A	B	C	D	E	F	G	H	J	WEIGHTS
1"	6	4-1/8	5-7/8	10-5/8	6-11/16	6-7/8	8-11/16	1/2	4-7/8	42
1-1/2"	6-7/8	5-3/4	6-7/8	11-3/16	7-1/4	6-7/8	12	1/2	4-7/8	62
2"	8-1/4	6-1/8	8-3/4	16-3/4	11	8-1/4	13-13/16	1/2	7	139
2-1/2"	8-1/4	6-1/8	8-3/4	16-3/4	11	8-1/4	13-13/16	1/2	7	141
3"	10-1/2	8-1/4	10-1/16	19-1/4	13	9-7/8	17-3/4	1/2	7-3/4	225
4"	12-1/2	10-7/16	11-9/16	21-1/4	15	9-7/8	22-5/8	1/2	7-3/4	298
5**	18-5/8	10-9/16	13	23-1/2	16	15	22-5/8	1/2	7-3/4	640
6**	18-5/8	10-9/16	13	23-1/2	16	15	22-5/8	1/2	7-3/4	650
8"	22	20-1/2	21-11/16	40-1/8	27-9/16	19-11/16	47-5/8	1/2	BOLTED COVER	1985

\*\* 5" & 6" DUPLEX STRAINER HAVE  
(2) BASKETS PER CHAMBER FOR  
A TOTAL OF (4) BASKETS

5", 6" & 8" SIZES HAVE STANDARD  
MOUNTING PADS AND PRESSURE  
EQUALIZING VALVES.



**KECKLEY**

3400 CLEVELAND SKOKIE ILLINOIS

STYLE BDPXF DUPLEX STRAINER

150# FLANGED CONNECTIONS

MAT'L: AS NOTED

REQ. —

DRAWING NO.  
73144-AL

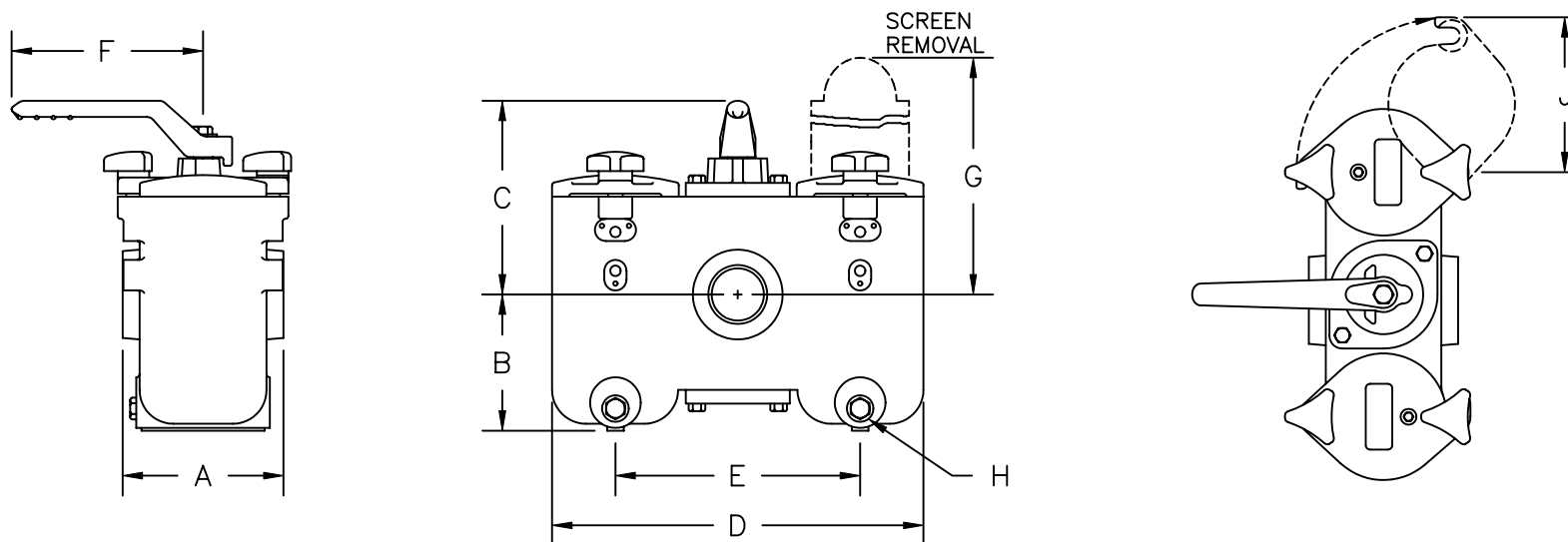
PART NO.

SCALE: NTS

DATE:8/14/96

DR.BY REW

DRAWING NO.  
73147-AL



PIPE SIZE	A	B	C	D	E	F	G	H	J	WEIGHTS
3/4"	4-3/4	4-1/8	5-7/8	10-5/8	6-11/16	6-7/8	8-11/16	1/2	4-7/8	35
1"	4-3/4	4-1/8	5-7/8	10-5/8	6-11/16	6-7/8	8-11/16	1/2	4-7/8	35
1-1/4"	5-3/8	5-3/4	6-7/8	11-3/16	7-1/4	6-7/8	12	1/2	4-7/8	44
1-1/2"	5-3/8	5-3/4	6-7/8	11-3/16	7-1/4	6-7/8	12	1/2	4-7/8	44
2"	7-1/4	6-1/8	8-3/4	16-3/4	11	8-1/4	13-13/16	1/2	7	117
2-1/2"	7-1/4	6-1/8	8-3/4	16-3/4	11	8-1/4	13-13/16	1/2	7	117

### PARTS LIST

BODY	CARBON STEEL
SLEEVE	BRONZE
INNER VALVES	BRONZE
INTERNAL MACHINE PARTS	STAINLESS STEEL
BASKETS	STAINLESS STEEL
DRAIN PLUGS	BRASS
O-RINGS	NITRILE
MAX. WORKING PRESSURE - 285PSI AT 100°F	

**KECKLEY**

3400 CLEVELAND SKOKIE ILLINOIS

STYLE SDPXS DUPLEX STRAINER

SCREWED (NPT) CONNECTIONS

MAT'L: AS NOTED

REQ. —

DRAWING NO.  
73147-AL

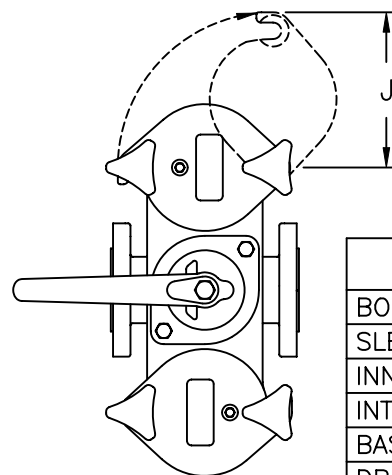
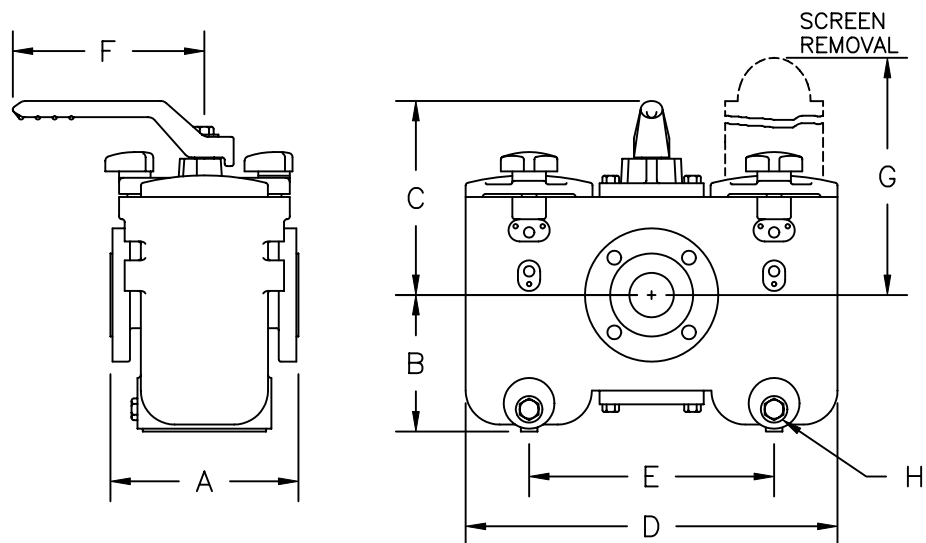
PART NO.

SCALE: NTS

DATE: 8/14/96

DR. BY REW

DRAWING NO.  
73146-AL



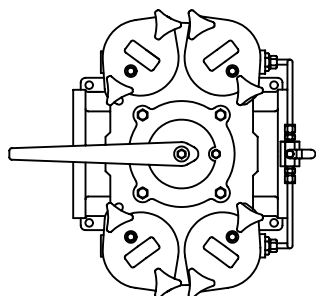
# PARTS LIST

BODY	CARBON STEEL
SLEEVE	BRONZE
INNER VALVES	BRONZE
INTERNAL MACHINE PARTS	STAINLESS STEEL
BASKETS	STAINLESS STEEL
DRAIN PLUGS	BRASS
O-RINGS	NITRILE
MAX. WORKING PRESSURE - 285PSI AT 100°F	

PIPE SIZE	A	B	C	D	E	F	G	H	J	WEIGHTS
1"	6	4-1/8	5-7/8	10-5/8	6-11/16	6-7/8	8-11/16	1/2	4-7/8	44
1-1/2"	6-7/8	5-3/4	6-7/8	11-3/16	7-1/4	6-7/8	12	1/2	4-7/8	53
2"	8-1/4	6-1/8	8-3/4	16-3/4	11	8-1/4	13-13/16	1/2	7	128
2-1/2"	8-1/4	6-1/8	8-3/4	16-3/4	11	8-1/4	13-13/16	1/2	7	132
3"	10-1/2	8-1/4	10-1/16	19-1/4	13	9-7/8	17-3/4	1/2	7-3/4	210
4"	12-1/2	10-7/16	11-9/16	21-1/4	15	9-7/8	22-5/8	1/2	7-3/4	300
5"	18-5/8	10-9/16	13	23-1/2	16	15	22-5/8	1/2	7-3/4	632
6"	18-5/8	10-9/16	13	23-1/2	16	15	22-5/8	1/2	7-3/4	642
8"	22	20-1/2	21-11/16	40-1/8	27-9/16	19-11/16	47-5/8	1/2	BOLTED COVER	1808

\*\* 5" & 6" DUPLEX STRAINERS HAVE  
(2) BASKETS PER CHAMBER FOR  
A TOTAL OF (4) BASKETS

5", 6" & 8" SIZES HAVE STANDARD  
MOUNTING PADS AND PRESSURE  
EQUALIZING VALVES.



**KECKLEY**

3400 CLEVELAND SKOKIE ILLINOIS

STYLE SDPXF DUPLEX STRAINER

150# FLANGED CONNECTIONS

MAT'L: AS NOTED

REQ. —

DRAWING NO.  
73146-AL

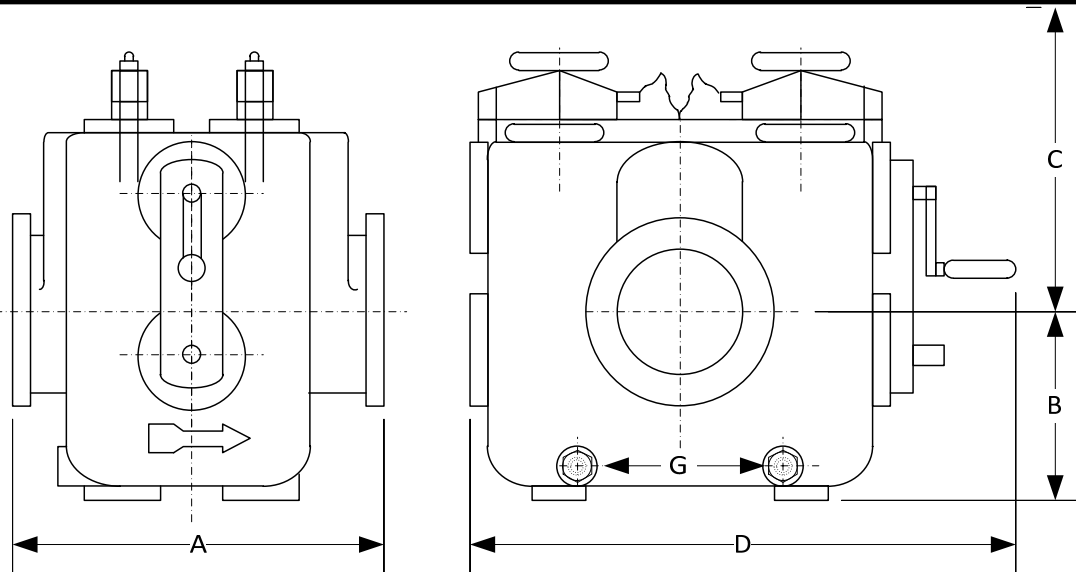
PART NO.

SCALE: NTS

DATE: 8/14/96

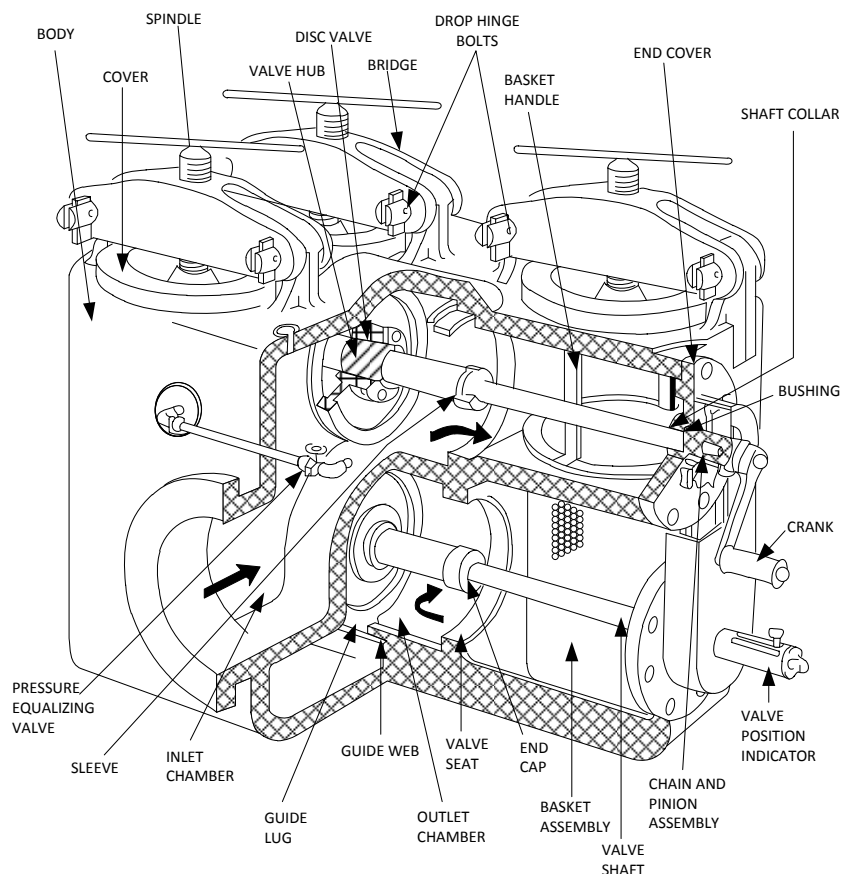
DR. BY REW

DRAWING NO.  
AL 73216



BODY PRESSURE & TEMPERATURE RATINGS – NON SHOCK		
NOM. RATING	MEDIA	10" to 20"
150# (STANDARD FLANGE)	W.O.G.	285 PSI @ 100°F

SIZE	DIMENSIONS (in)					Basket Area	WEIGHT (lbs)
	A	B	C	D	G BSPT	in <sup>2</sup>	
10	40.35	14.02	44.02	59.25	1-1/2"	1160	2987
12	40.51	15.00	44.01	59.25	1-1/2"	1160	3078
16	49.61	22.00	65.98	68.27	1-1/2"	2000	5260
18	50	23.00	65.00	68.27	1-1/2"	2000	5380
20	50	24.02	65.00	68.27	1-1/2"	2000	5415



**KECKLEY**

3400 CLEVELAND

SKOKIE ILLINOIS

DRAWING NO.  
AL 73216

DIMENSIONAL ASSEMBLY

PART NO.

150# Flange Style SDPXF, Carbon Steel

SCALE: NTS

Duplex Basket Strainer w/ 304 ss screen

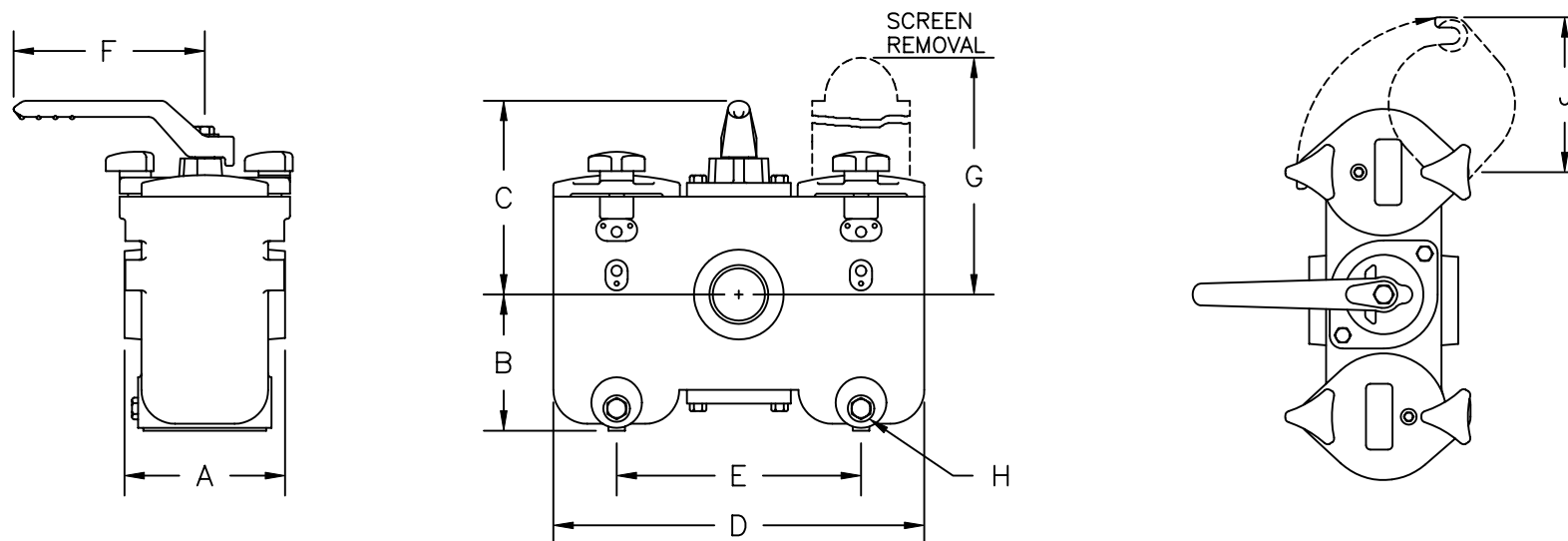
DATE: 01/29/2014

MAT'L: (As Noted Above)

REQ. ---

DR. BY DSF

DRAWING NO.  
73151-AL



PIPE SIZE	A	B	C	D	E	F	G	H	J	WEIGHTS
3/4"	4-3/4	4-1/8	5-7/8	10-5/8	6-11/16	6-7/8	8-11/16	1/2	4-7/8	35
1"	4-3/4	4-1/8	5-7/8	10-5/8	6-11/16	6-7/8	8-11/16	1/2	4-7/8	35
1-1/4"	5-3/8	5-3/4	6-7/8	11-3/16	7-1/4	6-7/8	12	1/2	4-7/8	44
1-1/2"	5-3/8	5-3/4	6-7/8	11-3/16	7-1/4	6-7/8	12	1/2	4-7/8	44
2"	7-1/4	6-1/8	8-3/4	16-3/4	11	8-1/4	13-13/16	1/2	7	115
2-1/2"	7-1/4	6-1/8	8-3/4	16-3/4	11	8-1/4	13-13/16	1/2	7	115

PARTS LIST	
BODY	STAINLESS STEEL
INNER VALVES	SS (Ni/PTFE coated)
INTERNAL PARTS	STAINLESS STEEL
BASKETS	STAINLESS STEEL
DRAIN PLUGS	STAINLESS STEEL
O-RINGS	VITON
MAX. WORKING PRESSURE - 275PSI AT 100°F	

**KECKLEY**

3400 CLEVELAND SKOKIE ILLINOIS

STYLE SSDPXS DUPLEX STRAINER

SCREWED (NPT) CONNECTIONS

MAT'L: AS NOTED

REQ. —

DRAWING NO.  
73151-AL

PART NO.

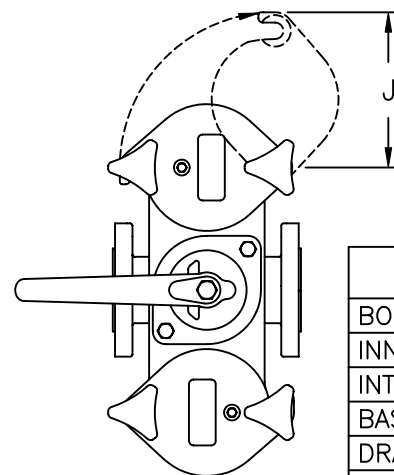
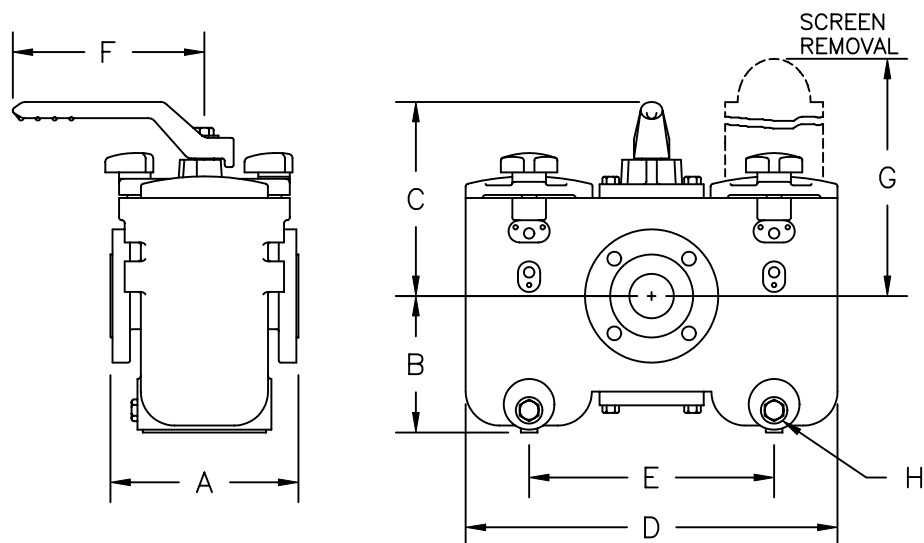
SCALE: NTS

DATE: 8/15/96

DR. BY REW



DRAWING NO.  
73150-AL



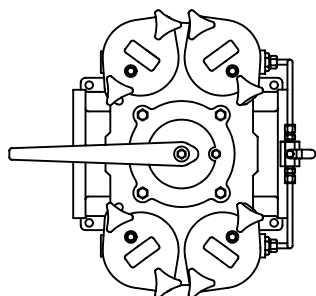
### PARTS LIST

BODY	STAINLESS STEEL
INNER VALVES	S.S. (Ni/PTFE coated)
INTERNAL PARTS	STAINLESS STEEL
BASKETS	STAINLESS STEEL
DRAIN PLUGS	STAINLESS STEEL
O-RINGS	VITON
MAX. WORKING PRESSURE - 275PSI AT 100°F	

PIPE SIZE	A	B	C	D	E	F	G	H	J	WEIGHTS
1"	6	4-1/8	5-7/8	10-5/8	6-11/16	6-7/8	8-11/16	1/2	4-7/8	44
1-1/2"	6-7/8	5-3/4	6-7/8	11-3/16	7-1/4	6-7/8	12	1/2	4-7/8	57
2"	8-1/4	6-1/8	8-3/4	16-3/4	11	8-1/4	13-13/16	1/2	7	128
2-1/2"	8-1/4	6-1/8	8-3/4	16-3/4	11	8-1/4	13-13/16	1/2	7	130
3"	10-1/2	8-1/4	10-1/16	19-1/4	13	9-7/8	17-3/4	1/2	7-3/4	212
4"	12-1/2	10-7/16	11-9/16	21-1/4	15	9-7/8	22-5/8	1/2	7-3/4	302
5"	18-5/8	10-9/16	13	23-1/2	16	15	22-5/8	1/2	7-3/4	663
6"	18-5/8	10-9/16	13	23-1/2	16	15	22-5/8	1/2	7-3/4	673
8"	22	20-1/2	21-11/16	40-1/8	27-9/16	19-11/16	47-5/8	1/2	BOLTED COVER	1896

\*\* 5" & 6" DUPLEX STRAINER HAVE  
(2) BASKETS PER CHAMBER FOR  
A TOTAL OF (4) BASKETS

5", 6" & 8" SIZES HAVE STANDARD  
MOUNTING PADS AND PRESSURE  
EQUALIZING VALVES.



**KECKLEY**

3400 CLEVELAND SKOKIE ILLINOIS

STYLE SSDPXF DUPLEX STRAINER

150# FLANGED CONNECTIONS

MAT'L: AS NOTED

REQ. —

DRAWING NO.  
73150-AL

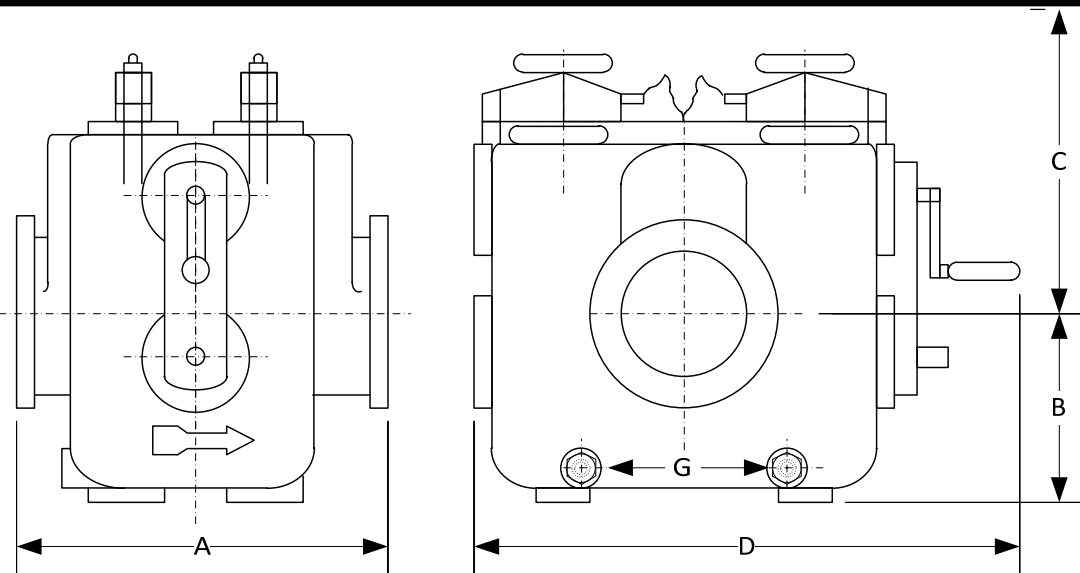
PART NO.

SCALE: NTS

DATE: 8/14/96

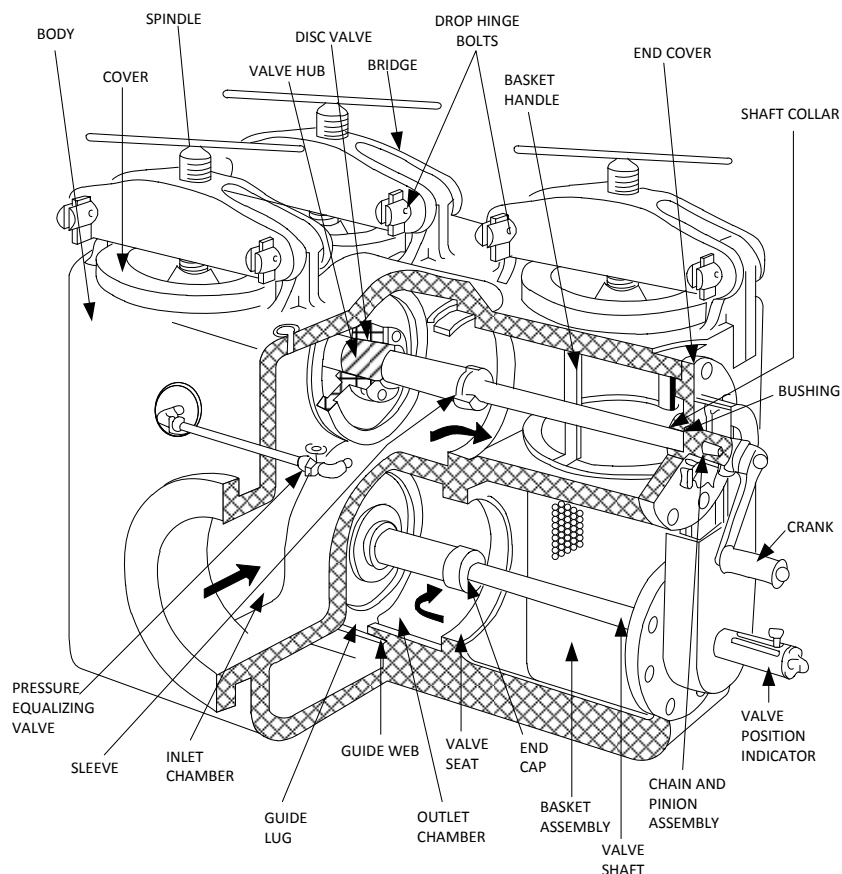
DR. BY REW

DRAWING NO.  
AL 73217



BODY PRESSURE & TEMPERATURE RATINGS – NON SHOCK		
NOM. RATING	MEDIA	10" to 20"
150# (STANDARD FLANGE)	W.O.G.	275 PSI @ 100°F

SIZE	DIMENSIONS (in)					Basket Area	WEIGHT (lbs)
	A	B	C	D	G BSPT	in <sup>2</sup>	
10	40.35	14.02	44.02	59.25	1-1/2"	1160	2987
12	40.51	15.00	44.01	59.25	1-1/2"	1160	3078
16	49.61	22.00	65.98	68.27	1-1/2"	2000	5260
18	50	23.00	65.00	68.27	1-1/2"	2000	5380
20	50	24.02	65.00	68.27	1-1/2"	2000	5415



**KECKLEY**

3400 CLEVELAND

SKOKIE ILLINOIS

DRAWING NO.  
AL 73217

DIMENSIONAL ASSEMBLY

PART NO.

150# Flange Style SSDPXF, Cast 316ss

SCALE: NTS

Duplex Basket Strainer w/ 304 ss screen

DATE: 01/29/2014

MAT'L: (As Noted Above)

REQ. ---

DR. BY DSF